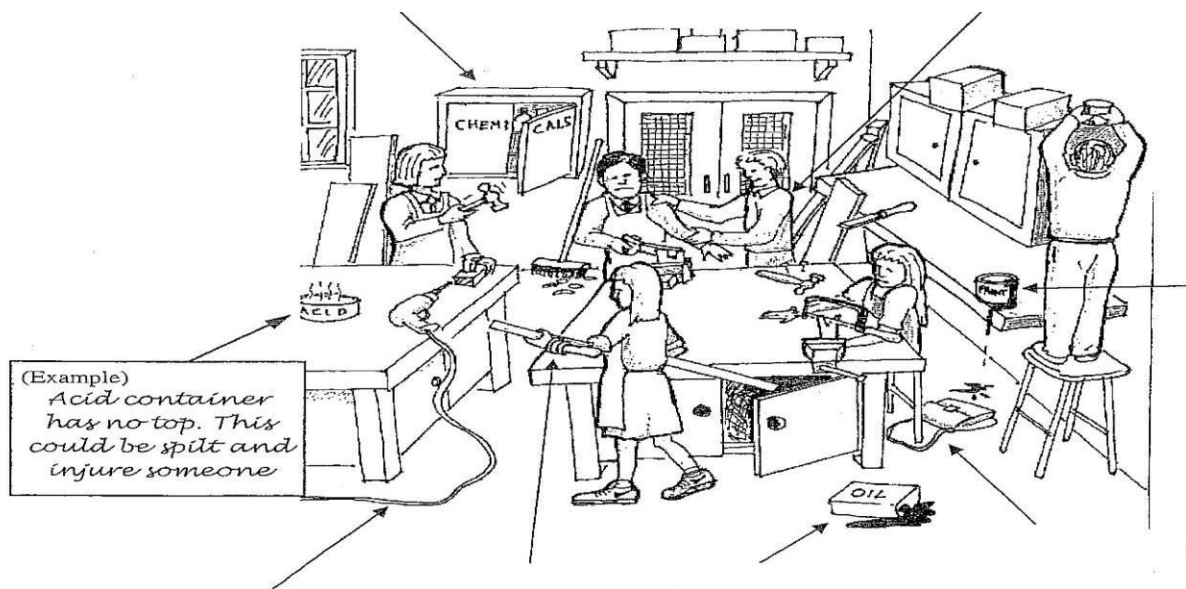


REVIEW QUESTIONS

1. What action should be taken if you had:
 - a) a **burn**,
 - b) something in your **eye**,
 - c) an **electric shock**?
2. Draw a person wearing **five pieces of safety clothing**.
3. What **five general safety rules** would you use if writing a '**machine safety**' notice for a general purpose workshop?
4. Make a **safety notice for a drilling machine** which is to be placed next to the drilling machine.
5. What **safety advice** should be given to a person who has been given an **old electric drill**?
6. List the **faults** shown in the diagram given below. An example has been done for you.



7. Why is **health and safety** important in the workshop?
8. What is the **first step** you will take if your colleague gets hurt while using a hand chisel?
9. What does the following **safety symbols** mean?



10. What is **first aid**?

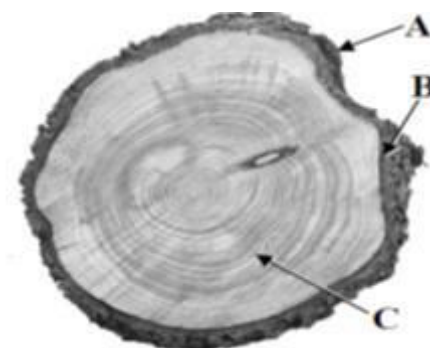
11. List five important supplies or equipment used while giving first aid. Where are these supplies kept?
12. What is a **service/maintenance record**? How often should you service a portable drilling machine?
13. How should you lift a box from the floor to the work bench?
14. In a group of five, make a list of the hazardous areas you find in your school workshop and the school campus. Whom should you submit this list to? Have you highlighted the areas that need immediate attention? Do you know your schools **OHS** representatives?
15. In a group of five, make a chart on '**safety in the workshop**' and do a class presentation by explaining each element listed/drawn on the chart.

When the problem has been identified, it is necessary to examine and analyse it. If, for example, one is trying to find a solution to the problem of fast travel from place to place, the analysis of the problem may take a form such as the following:

1. How many people are to be carried at a time?
2. How fast?
3. Wheeled vehicle? One, two, three, four or more wheels?
4. Are wheels in fact necessary?
5. Human-powered vehicle? Pulled, pushed, bicycle type?
6. Animal-powered vehicle? Which animal?
7. To travel on land, on water, in the air?
8. Wind powered? If so, is it to be a land, water or air vehicle?
9. Powered by some form of mechanical unit? Gas powered, oil or petrol powered, powered by electricity?
10. Any other form of power suitable?

REVIEW QUESTIONS

1. The diagram shows a cross section through a tree trunk.
 - (i) Name the parts labelled A, B and C and describe the function of each.

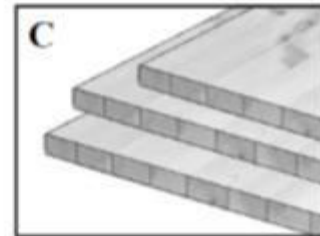
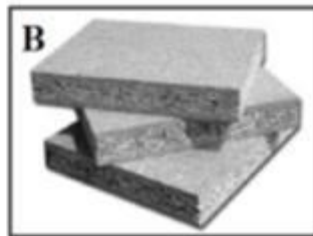
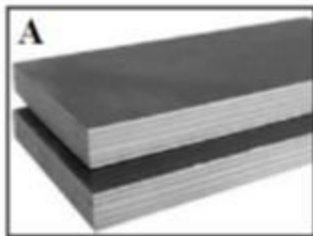


2. The conservation of tropical rainforests is essential for environmental reasons.
 - (i) Give TWO reasons why we should conserve these rainforests.
 - (ii) Suggest TWO ways in which we can continue to use attractive hardwoods in an environmentally Friendly manner.
3. Deforestation of our tropical rainforests is an important environmental issue. With reference to protection and conservation:
 - (i) State TWO reasons why we should conserve our tropical rainforests
 - (ii) State TWO ways that the use of manufactured boards can help reduce the current rate of global deforestation.

4. When timber is being seasoned it is important to allow air circulation around the boards. Make a neat freehand sketch to show how this is achieved.
5. The diagram on the right shows a board which warped badly during seasoning. Explain why this might have happened and, using notes and a neat freehand sketch, show how the warping might have been prevented.



6. Briefly explain FOUR advantages that manufactured boards have over solid wooden boards.
7. Name the THREE manufactured boards labelled A, B, and C below.



8. The diagram shows a coffee table made from a hardwood.

- (i) Name THREE clear finishes that could be applied to the table. Select ONE finish that would be best suited for the table and give TWO reasons for your choice.
- (ii) With the aid of neat freehand sketches, describe in detail the steps you would follow to prepare the wood for the finish you have chosen.
- (iii) State TWO specific safety precautions that should be observed when using applied finishes.
- (iv) Select a suitable hardwood for the manufacture of the coffee table and give TWO reasons for your choice of hardwood.

