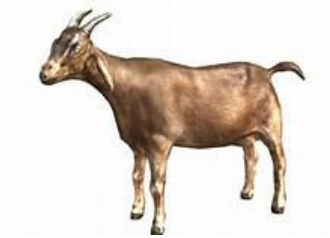


1874 Nasinu Sangam School
Year 8
Basic Science
Worksheet 1

Question 1 Short Answer Questions

- (a) The diagram given below shows a goat.



- (i) Why is a goat called a herbivore?
- (ii) Give an example of a carnivore.
- (b) (i) State three rules to follow while studying in an area where plants and animals live.
- (ii) Name an adaptive feature of an earthworm.
- (iii) How does this feature help it to survive?

Question 2

- (a) A plant which depends on other plants for support is called _____.
- (b) State one way in which a snail protects itself from its enemies.
- (c) What happens to producers, herbivores, and carnivores when they die?
- (d) State one reason why the Government has banned the shooting of the Peale's Pigeon throughout the year.
- (e) Why is it important for us to protect our coral reef?
- (f) Name some famous coral reefs found in Fiji.

