

Sangam SKM College- Nadi

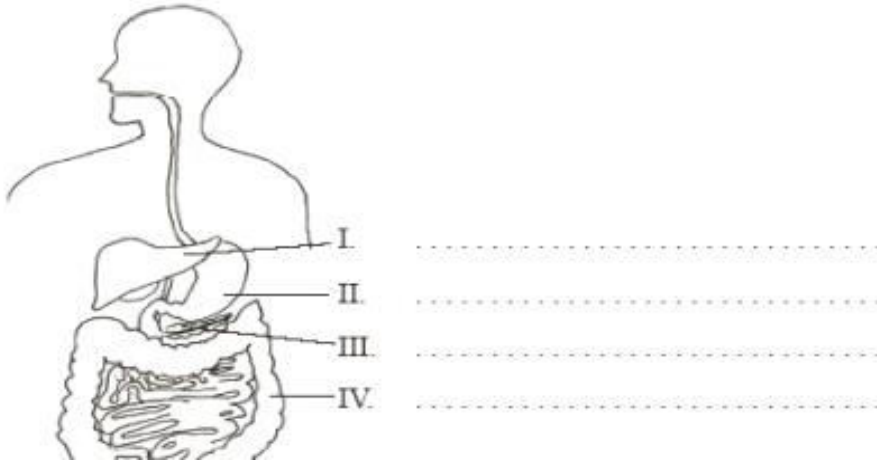
Year 10

Basic Science

Worksheet 5

Questions

1. Identify the parts of the human digestive system indicated below.



2. Discuss the relationship between high levels of saturated lipids in the diet and health of the individual.

---

---

---

3. Complete the sentence with appropriate word; please refer to the notes from pages 9 to 13 to answer the questions below.

(i) The \_\_\_\_\_ is a pear-shaped sac found on the interior surface of the liver.

(ii) Which part of the alimentary canal contains villi?

---

(iii) The \_\_\_\_\_ is the body's largest internal organ.