

**BA SANGAM COLLEGE  
YEAR 13  
COMPUTER  
WORKSHEET 2**

**QUESTION 1**

**INFORMATION SYSTEMS**

- i. A soft drink company decides to branch out into a new business segment.
  - a. Which department would be responsible for this?
  - b. They finally agree to venture into the bottled water business. Which activity of the department you named in (a) above was responsible for assisting in determining this?
- ii. The accounting department handles six activities. Five of these are sales order processing, accounts receivable, inventory and purchasing, accounts payable and General Ledger. Identify and explain the sixth activity.
- iii. Differentiate between the responsibilities of a middle level manager and a top level manager.
- iv. Why is the information flow in the middle level of management both vertical and horizontal?
- v. One type of information system is Knowledge Work Systems. What are KWS's? Give an example of where KWS may be used.
- vi. Office Automation Systems (OASs): are designed primarily to support data workers. What do these systems primarily focus on?

**QUESTION 2**

**SYSTEMS ANALYSIS AND DESIGN**

- i. Why is a report prepared at the end of each of the initial phases in SAD?
- ii. One of the phases of SAD is System Design. Using an example explain the three steps involved in this phase.
- iii. Out of all the Conversion methods, pilot and phased approaches are the most favoured. When would you use the pilot approach for implementation?
- iv. There are a few alternatives Systems Analysis and Design.
  - a. One alternative is prototyping. Why would you use prototyping? Give one reason.
  - b. Identify and describe the other alternative to Systems analysis and Design.

### QUESTION 3

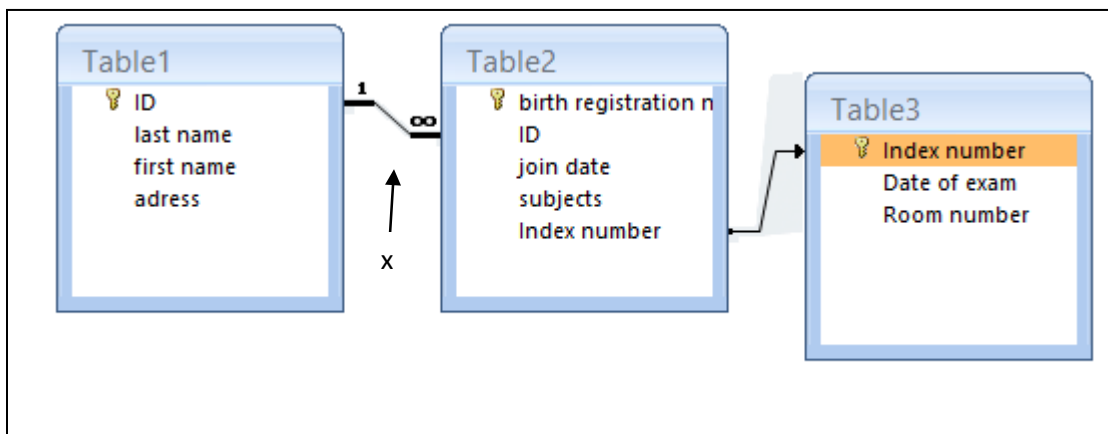
### DATABASES

- i. Use the given image to answer this question.

employees record	
Field Name	Data Type
employee id	Text
last name	Text
first name	Text
address	Text
city	Text

Employee id is a special type of field. Identify and describe this type of field.

- ii. Differentiate between batch and real-time processing.
- iii. Explain the following terms related to databases.
- Data definition sub-system
  - Data maintenance
- iv. Using an example, explain index sequential file database organization.
- v. Explain the relationship between a company database and a distributed database. You can use only an example to write the explanation.
- vi. Use the following image to answer the questions that follow.



- a. The marking labeled x denotes the \_\_\_\_\_ between Table1 and Table2.
- b. Why are all three tables linked as such?