

**Labasa Sangam (SKM) College**

**Year 11B/E**

**History**

**Worksheet 2**

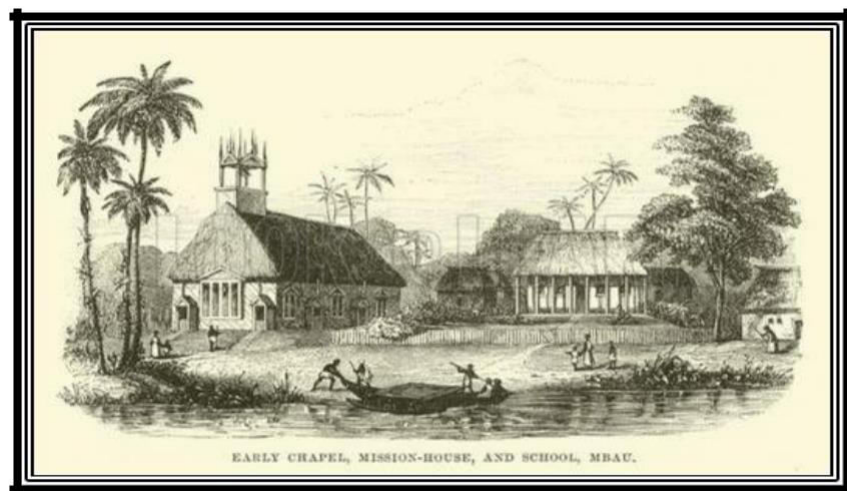
### **Question1: Short answer questions**

Each question is worth two marks.

- i. Define multiculturalism and state its importance.
- ii. Explain the reason of having mission schools in the early 1800s.
- iii. Explain the influence early missionaries in Fiji had on integration and interaction before 1879.
- iv. State two ways Fiji benefited from winning the 7s Rugby World Cup in 2005.
- v. Define culture and state its importance.
- vi. State two significance of Levuka in the early 19<sup>th</sup> century.
- vii. Explain the impact of Fiji's independence on its economy.
- viii. Describe the significance of religious organizations in terms of cultural integration in the early 1874 to 1970.
- ix. State the year and the name of the first ship that brought the indentured labourers to Fiji.
- x. State two contributions of rugby to Fiji from 1880 to 1904.

### **Question 2: Resource Interpretation**

#### **Resource 1**



- i. State two changes that you can see in the resource above.
- ii. Explain the role of the early chapel, mission-house and school as shown in the resource above.

### **Resource II**



- (iii) Name this yacht club in Suva and state the year of its establishment.
- (iv) Explain the purpose of this yacht club's establishment.

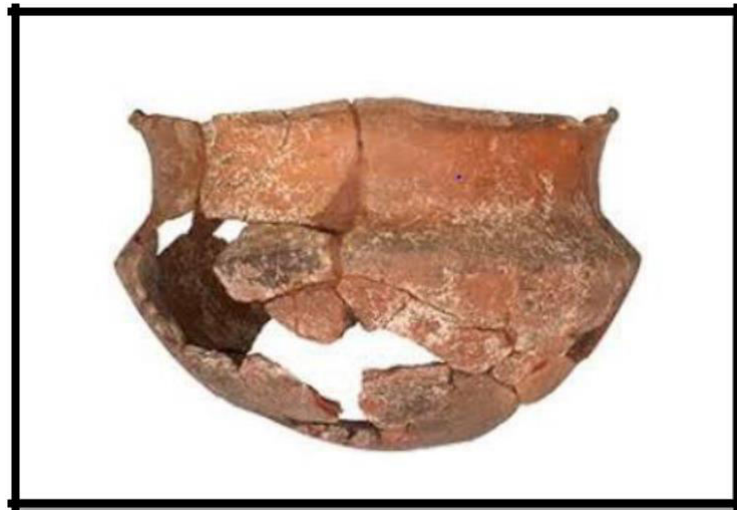
### **Resource III**



v) State the term used when referring to specialist who conduct scientific studies of prehistoric remains as shown in the resources above and mention the key role they play with regards to history.

vi) Explain the significance of such prehistoric remains as shown in the resource above.

#### **Resource IV**



vii) State the term used when referring to specialists who conduct scientific studies of prehistoric remains as shown in the resource above and mention the key role they play with regards to history.

vii) Explain the significance of such prehistoric remains as shown in the resource above.

