

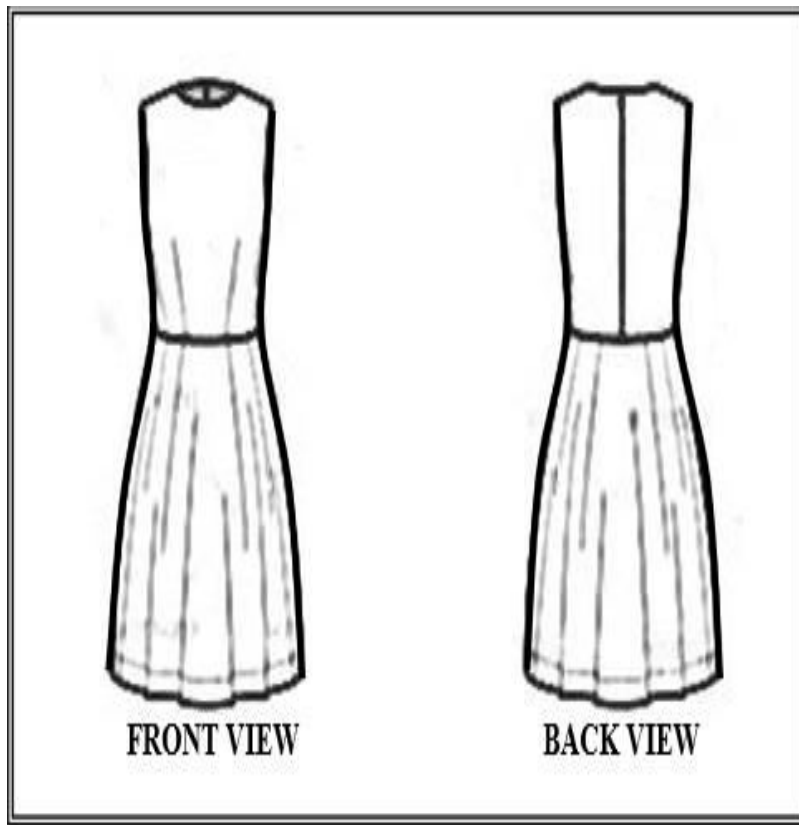
PENANG SANGAM HIGH SCHOOL
YEAR 12
HOME ECONOMICS
WORKSHEET 1

Short Answer Questions

1. State one disadvantage of formula feeding for infants.
2. Explain the importance of exercise during the post natal period.
3. Explain the importance of cord care for the baby.
4. State one characteristic of good parenthood.
5. How changing women role and dual career families do affects the family structure?
6. Explain how education influences the choice of food in families.
7. Define palatability
Identify one property of food that is responsible for its palatability.
8. There are many factors that contribute to family's choice for food. Explain how nutritional knowledge determines a family's diet.
9. State one reason for applying fabric finishes during the production of fabrics.
10. Differentiate between felting and bonding.
11. Stains and spots are easily removed when basic rules for stain removal are clearly understood. State one rule for stain removal.
12. Explain the process of dry cleaning.
13. Sera is planning to stitch the blouse illustrated below.



- i. List 2 important measurements needed to make the blouse illustrated above.
 - ii. Draw and label one pattern piece for the Front view and the one pattern piece for the Back view needed to make the shirt.
14. Sarah is planning to stitch the dress illustrated below.



- i. List two important measurements needed to make the dress illustrated.
 - ii. Draw and label one pattern piece for the Front view and one pattern piece for the Back view needed to make the dress.
 - iii. List two methods of disposal of fullness that will be applied on the dress.
 - iv. List two suitable sewing notions for the dress.
15. Table setting is important during a meal. In the space provided, draw the table setting for **casual breakfast** and label the cutlery **A**, **B**, and **C**.