

Sangam S.K.M College-Nadi

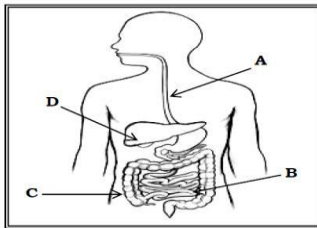
Year 10

Home Economics

Worksheet : 5

Question 1

The diagram below shows the Human Digestive system.

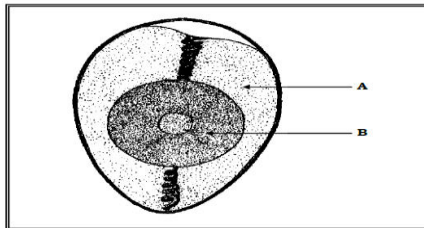


Source: <https://catalog.nlm.nih>

- (i) Name the parts labelled **A**, **B**, **C** and **D**.
- (ii) State the function of the mouth in the digestion process.

Question 2

The diagram given below shows the structure of an egg. Study the diagram and answer the questions that follow.



- (i) Label parts **A** and **B**.
- (ii) Name **one** vitamin that is present in the part labelled **B**.

Question 3

- i. Define offal.
- ii. Identify 2 ways you can use to tenderize meat.
- iii. State 2 ways of storing raw meat.