

SHEET 1

PENANG SANGAM HIGH SCHOOL
 YEAR 11
 TECHNICAL DRAWING
 WORKSHEET – 2

QUESTION 1

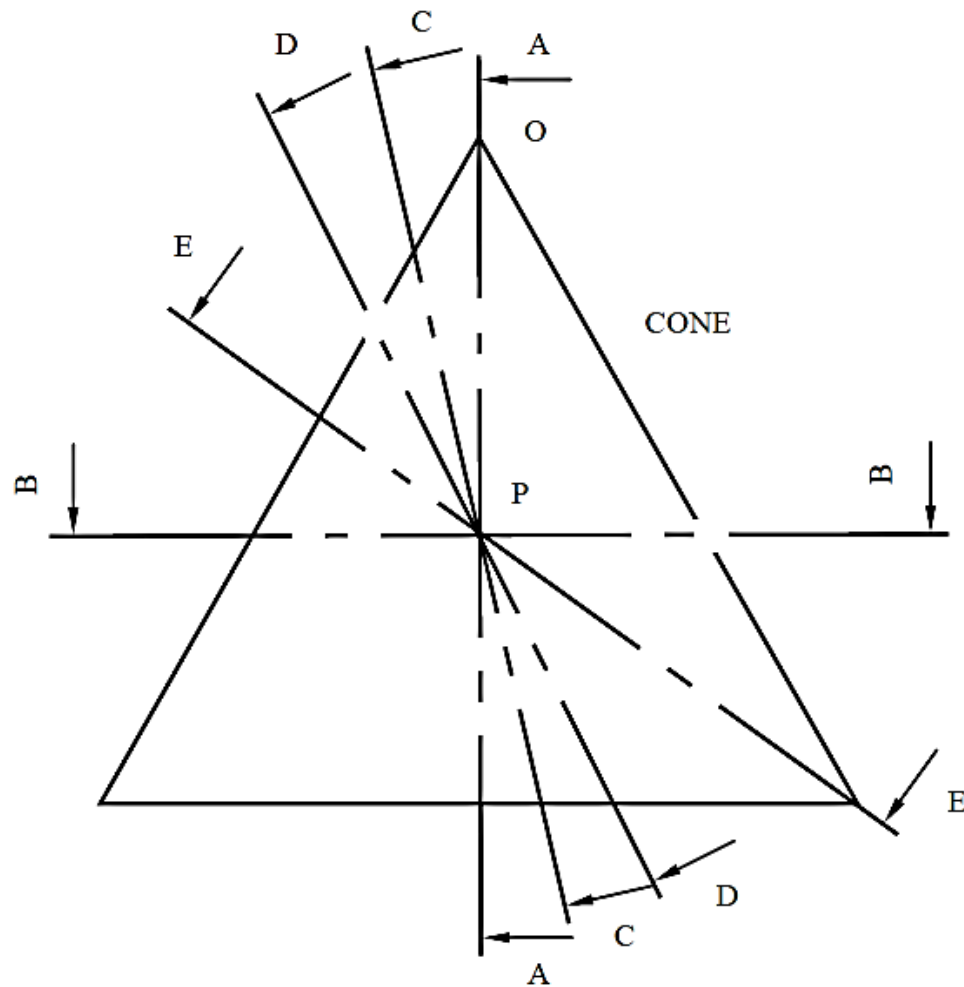
PART A

(5 marks)

Given: The elevation of a cone, vertex O, point P on its axis and cutting planes AA, BB, CC, DD and EE.

Required: Name the conic section formed by the cutting planes shown below.

- AA: _____
- BB: _____
- CC: _____
- DD: _____
- EE: _____

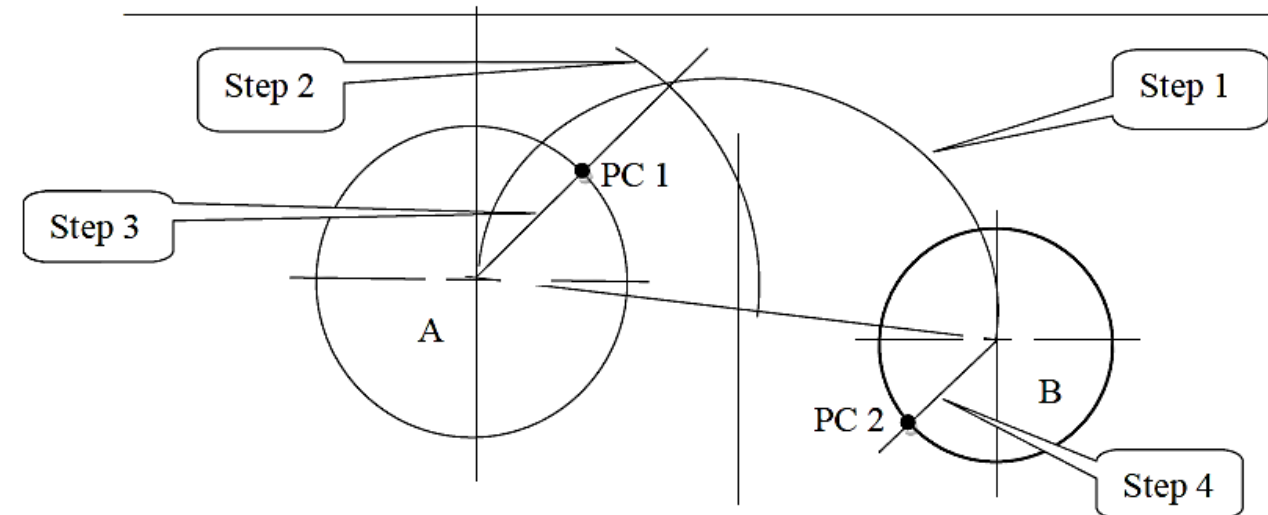


PART B

(4 marks)

Given: Circle A and circle B with unequal radius and a line tangent to both circles.

Required: Discuss the steps shown below in locating the line tangent to both circles.



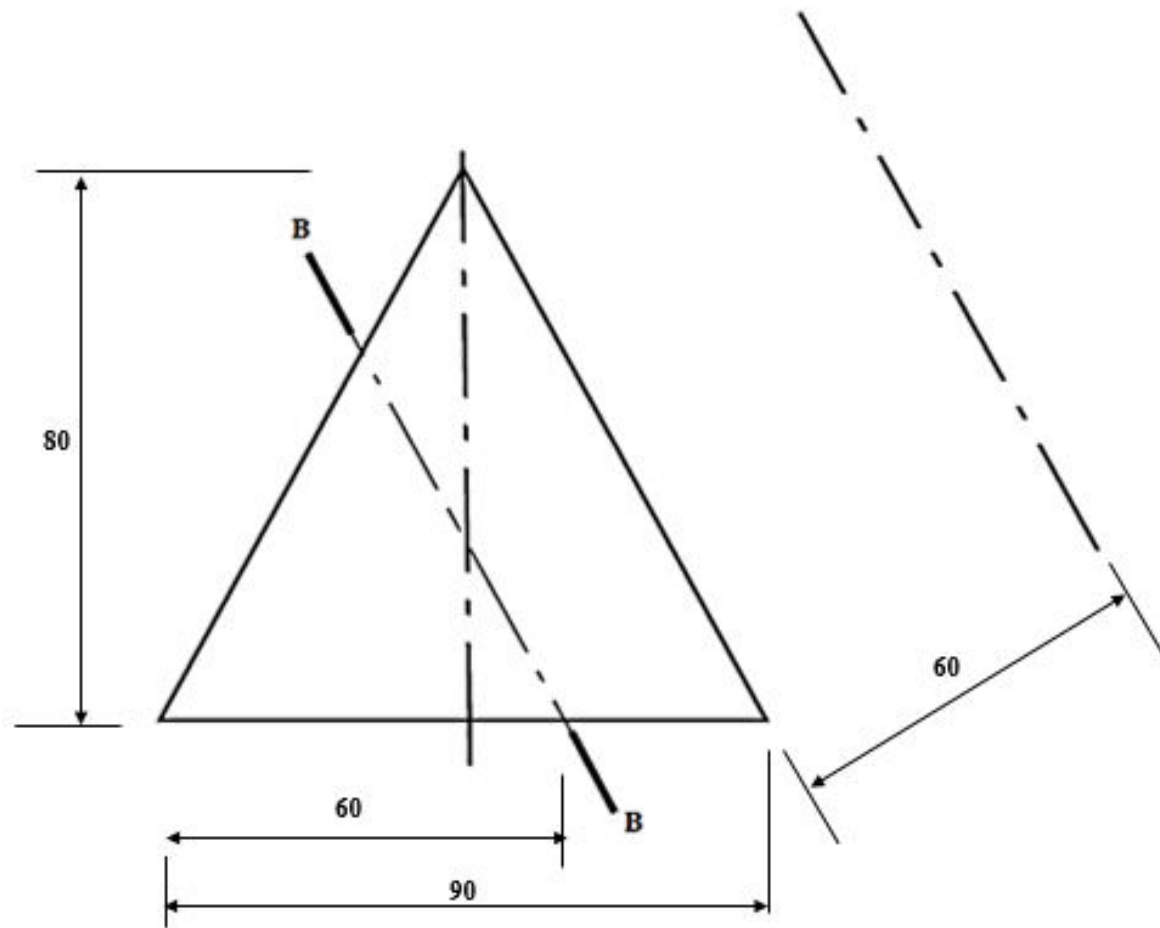
QUESTION 2

PART A (8 marks)

Given: The elevation of a cone cut by a cutting plane **B-B**.

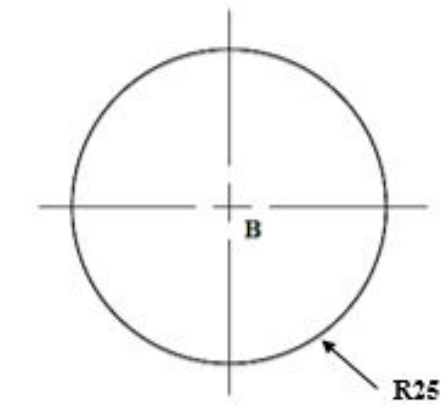
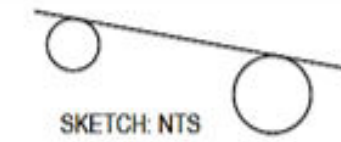
Required:

- (i) Show the focal point, vertex and directrix on the elevation. (3 marks)
- (ii) Project the true shape of section. (5 marks)



PART B (5 marks)

Construct an External Tangent to circle A and B. Use the sketch as a guide.



THE END