

PENANG SANGAM HIGH SCHOOL
YEAR 10 BASIC SCIENCE WORKSHEET 2021

WEEK 5 (28/06 – 02/07)

1. A group of students dissected a toad and saw a spongy pink organ. This organ is the

- | | | | | | |
|---------------|-----------|--------------|-----------|------------------|----------------|
| (Refer | to | table | on | Digestive | Organs) |
| A. Lung | | | | C. Heart | |
| B. Liver | | | | D. Stomach | |

2. Refer to notes on Blood to answer the question below:

That part of the blood that carries soluble particles such as glucose is the

- A. White blood cell
- B. Red blood cell
- C. Platelets
- D. Plasma

3. Refer to notes on Respiratory System to answer the question below:

Respiratory system consists of many tiny air sac called alveoli. The function of alveoli is to

- A. Transports digested food
- B. Purify blood by removing carbon dioxide
- C. Detoxify the blood
- D. Excrete oxygen

4. Marine ecosystem is the ecosystems in the (Refer to notes on the Marine Ecosystem)

- A. forest
- B. ocean
- C. soil
- D. sky

5. Refer to notes on the Female Reproductive System to answer Questions #5 and #6:

Match the female reproductive organs (**List A**) with its respective function. (**List B**)

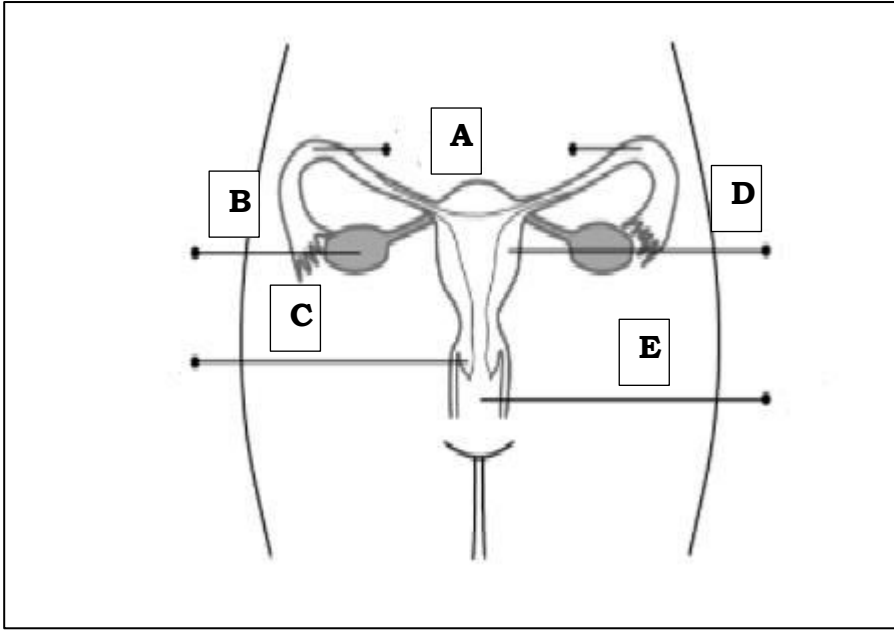
List A

List B

- | | | |
|-------------|------|--|
| i) Cervix | ---- | a) produces egg/ ovum |
| ii) Vagina | ---- | b) tube where the fertilization takes place. |
| iii) Ovary | ---- | c) place where the fetus (developing baby) develops. |
| iv) Oviduct | ---- | d) place where the semen gets deposited. |
| v) Uterus | ---- | e) it is the opening to the uterus |

6. Below is the diagram of the Female Reproductive System.

Label the parts (A – E)



7.State the colour of the following organs in our digestive system:

(Refer to table on Digestive Organs)

- a. Gall bladder
- b. Liver
- c. Pancreas
- d. Liver
- e. Stomach
- f. Heart

8. Define the following terms involved in a female reproductive system:

(Refer to notes on the Female Reproductive System)

- a) Menstruation
- b) Ovulation
- c) Puberty

9. **Refer to notes on the Marine Ecosystem to answer the questions below:**

State any two crucial roles that the oceans play in the marine ecosystem.

10. Explain what happens to the thorax, diaphragm and rib cage during the:

a) Inhalation process?

b) Exhalation Process?

Refer to notes on Breathing

11. State the function of the following dissecting equipment used for dissecting a frog:

- a) Scalpel
- b) Forceps
- c) Dissecting probe/needle
- d) Dissecting tray
- e) Dissecting pins

Refer to notes on Materials for Dissecting a frog

STAY SAFE



