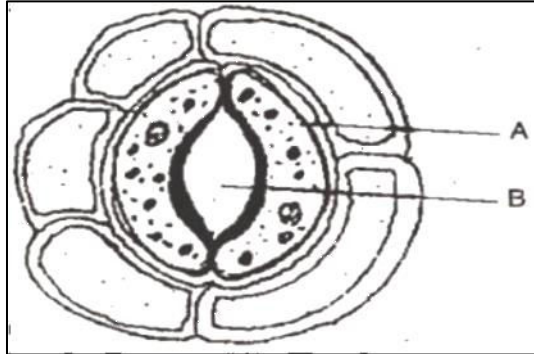


PENANG SANGAM HIGH SCHOOL
YEAR 9 BASIC SCIENCE WORKSHEET 2021

WEEK 5 (28/06 – 02/07)

1. A student made observations on the internal structure of a leaf. She saw the figure shown in the diagram given below. **(Refer to the Internal structure of a leaf diagram)**



She identified the cells marked A as

- A. Phloem cells
 - B. Spongy cells
 - C. Guard cells
 - D. Chloroplast
2. Which of the following is not true about the process of fertilization?

(Refer to Sexual Reproduction in Plants notes)

- A. It occurs after the process of pollination
 - B. It occurs inside the ovary of the plants
 - C. It occurs in asexual reproduction
 - D. The end product is the zygote
3. A natural process which releases oxygen in the atmosphere is

(Refer to Photosynthesis notes)

- A. Photosynthesis
- B. Transpiration
- C. Respiration
- D. Absorption

4. Which of the following describes the method of dispersal of coconuts?

(Refer to Dispersal of seeds notes)

- A. Wind
- B. Water
- C. Animal
- D. Explosion

5. Name the three types of graphs studied in Year 9 this year. **(Refer to Types of Graphs notes)**

6. Write the correct procedure for the following statement for heating in a test tube:

(Refer to notes on Rules for heating in a test tube)

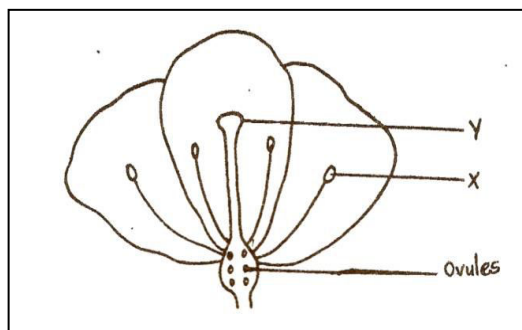
- i) Heat the bottom of the test tube.
- ii) Point the test tube towards others while heating.
- iii) Always fill the test tube more than half full while heating.

7. **For the following statement, give the units used for measuring the measurement.**

(Refer to Measurement topic)

- i) Sylvia's weight is less than Esther's weight.
- ii) Josateki ran the fastest time in the 400m heat.
- iii) The volume of water in the tank was measured.
- iv) The length of the desk was measured during the Basic Science class.

8. A cross – section of a flower is given below. **(Refer to parts of a flower handout)**



- i. Name the part labeled **X**.
- ii. Name the **functions** of parts.
 - **X** ?
 - **Y** ?
- iii. Give **one** feature of the flower which enables it to be pollinated by insects.
- iv. What will the ovule develop into after fertilization?

...STAY SAFE...

