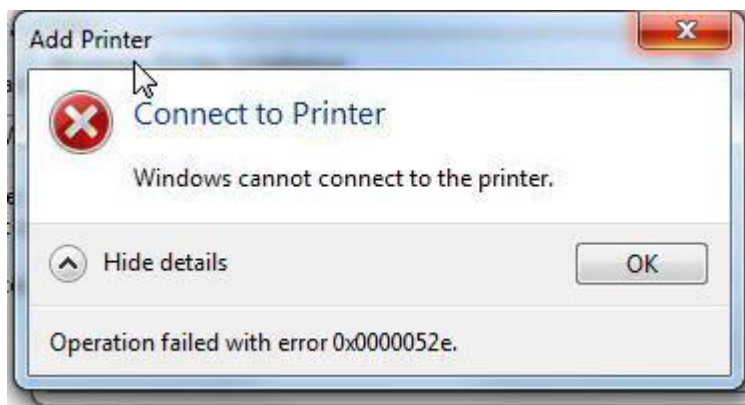


**BA SANGAM COLLEGE  
YEAR 13  
COMPUTER  
WORKSHEET 3**

**QUESTION 1**

**INSTALLING HARDWARE AND SOFTWARE**

- i. What is the difference between a SIMM and DIMM?
- ii. What is the CMOS?
- iii. Why would you create partitions on a hard disk when you install an operating system?
- iv. RAM is available as DDR, DDR2 and DDR4. Expand DDR.
- v. What is the purpose of the ping command?
- vi. When would you use a crossover cable over a straight through cable?
- vii. The following Windows error message is displayed when you try to connect to a network printer.



- a. Why would this message be displayed?
- b. How would you resolve this issue?

## ESSAY

### QUESTION 1                    SYSTEMS ANALYSIS AND DESIGN

System Analysis and Design is a 6-step procedure.

Smarty Shoes Company is a multinational company which employs more than 1000 people. Currently the company uses a manual system for recording its employee details. Upon hearing the benefits of a computerized system the company has requested you to design a new computerized database system for recording their employees' details.

Using the first three phases of the systems life cycle:

- Discuss how you would carry out the **three** tasks for each phase.
- Use examples where applicable.

### QUESTION 2                    DATABASES

DBMS programs are designed to work with data that is logically structured or arranged in a particular way. This arrangement is known as the database model. These models define the rules and standards for all the data in a database. There are five common database models. Two older models are the hierarchal and network database organization.

- Identify and explain the three recent database organizations. Draw a diagrammatic representation for each database organization you have identified.
- Discuss two advantages of a having a database.
- Discuss one disadvantage of a having a database.

### QUESTION 3                    INSTALLING HARDWARE AND SOFTWARE

There must be a good reason for an organization to decide to spend money on installing new hardware components and software. The benefits should outweigh the costs.

- What do I.T support Technicians primarily do?
- Identify and discuss the three key reasons for installing new hardware components.
- Write an example for each reason given above.
- Identify two key safety procedures during installing hardware and software.
- List at least one way to avoid the problems arising from neglecting each of the safety procedures written above.

**THE END**