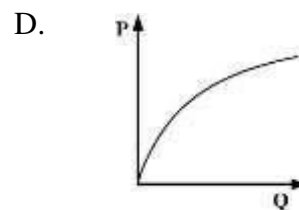
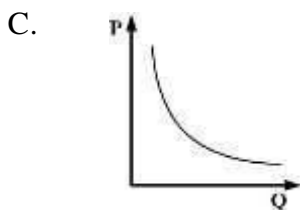
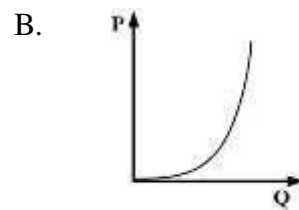
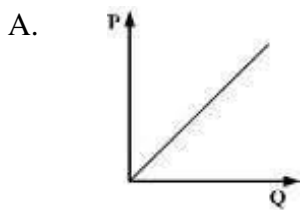


**PENANG SANGAM HIGH SCHOOL**  
**YEAR 11 PHYSICS**  
**WEEK 6**

1. What is the SI unit for mass?
- A. nanogram
  - B. milligram
  - C. kilogram
  - D. gram
2. Which of the following graphs shows a directly proportional relationship between P and Q?

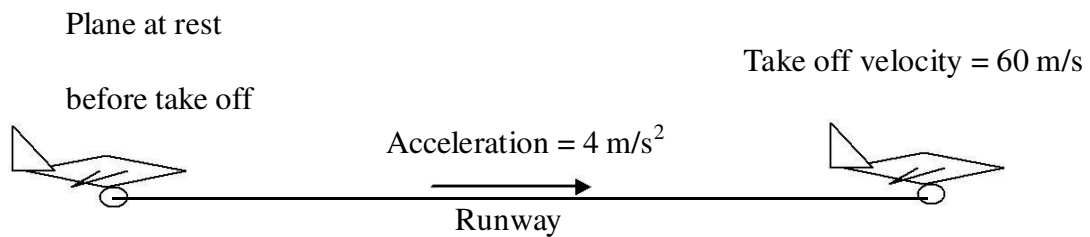


3. Which of the following terms is a quantity that has magnitude only?
- A. Resultant
  - B. Vector
  - C. Arrow
  - D. Scalar
4. Whose law states that force is the product of mass and acceleration?
- A. Einstein's Law
  - B. Newton's Law
  - C. Samit's Law
  - D. Boyles Law
5. Turning effect of a force about a given reference point is known as
- A. pressure.
  - B. energy.
  - C. spindle.
  - D. moment.

6. What does the area under a velocity time graph represent?

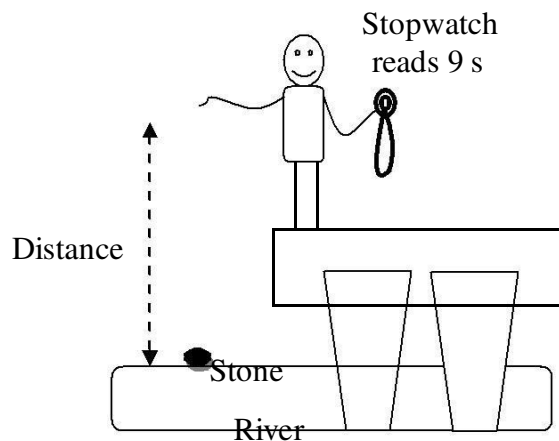
- A. Displacement
- B. Acceleration
- C. Velocity
- D. Slope

(c) An engineer is designing the runway of an airport where planes have an acceleration of  $4 \text{ m/s}^2$  and take-off speed of  $60 \text{ m/s}$ .



**Calculate the expected length of the runway. (list the information then use the correct equation of motion )**

(d) Smiley was standing on a bridge above a river. He drops a stone into the river and measures the time it takes to splash into the water.



If the time he recorded was 9 seconds, determine the distance the stone covered before hitting the water. ( **this is free fall, list the information then use the correct equation of motion** )