

**PENANG SANGAM HIGH SCHOOL
P.O.BOX 44, RAKIRAKI**

LESSON NOTES

Week 9: 19/07/21 TO 23/07/21

Year/Level: 10

Subject: AGRICULTURAL SCIENCE

STRAND	STRAND AS10.3 AGRONOMY
SUB STRAND	SUB-STRAND AS 10.3.2 HORTICULTURE
CONTENT LEARNING OUTCOME	AS 10.3.2.1. DISCUSS AND DEMONSTRATE METHODS OF PLANT PROPAGATION.

LESSON 1: SEXUAL PROPAGATION

Lesson outcome:

1. Define sexual method of plant propagation
2. State the advantages and disadvantages of sexual propagation
3. Differentiate between monocotyledon and dicotyledon seed

VOCABULARY

Sexual Propagation - new plants are produced through seeds.

Monocotyledon - these seeds have only one cotyledon and the food is stored outside the embryo in the endosperm e.g. maize seeds, cereals and grasses

Dicotyledon - these seeds have two cotyledons attached to the embryo, which contain the reserve food.

NOTES

Sexual propagation is a process which involves seeds which have to undergo the process of germination in order to grow into a new offspring. There are two types of seed.

Monocotyledon seed has only one cotyledon and Dicotyledon seed has two cotyledons.

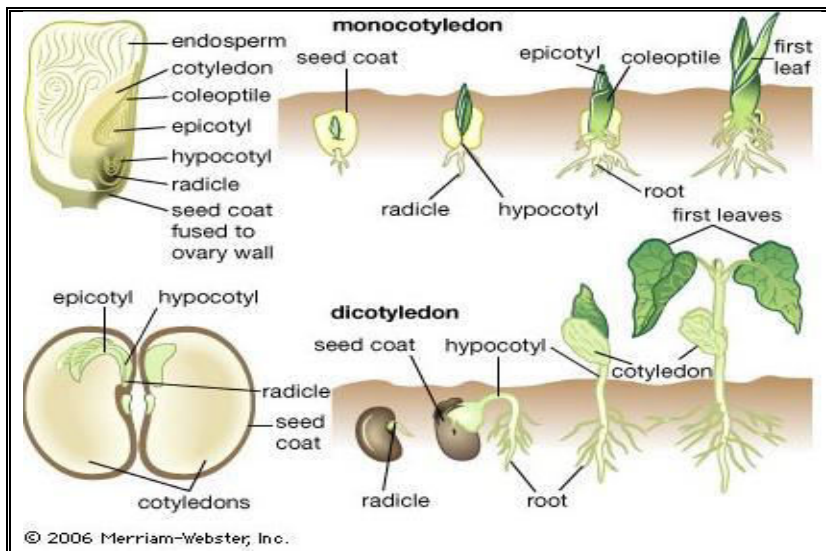
SEXUAL PROPAGATION

ADVANTAGES

- ☺ Produce a large number of plants in a short period of time
- ☺ Can handle large numbers easily
- ☺ Produces hybrids which have characteristics of both parents

DISADVANTAGES

- ☺ Some plants produce no viable seeds
- ☺ Some seeds are very difficult or slow to germinate
- ☺ Causes genetic variability due to production of hybrids

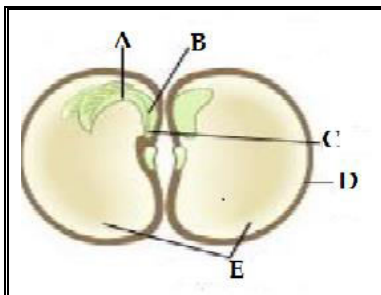


Self-evaluation activity

1) COMPLETE THE FOLLOWING SENTENCES

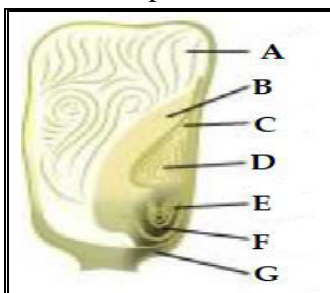
- _____ is the main part of the plant that is used in sexual propagation
- Sexual propagation will result in producing a totally new offspring which is usually referred to as _____.
- Many of the plants that cannot be propagated through seeds can also be propagated using the method of _____ propagation

2) Label the parts of a dicotyledon seed below.



- A _____
 B _____
 C _____
 D _____
 E _____

3) Label the parts of a monocotyledon seed below



- A _____
 B _____
 C _____
 D _____
 E _____
 F _____
 G _____