

1009 NAVOLI SANGAM SCHOOL
HOMESTUDY PACKAGE 4
YEAR: 5- ENGLISH

STRAND	WRITING and SHAPING
SUB- STRAND	LANGUAGE, FEATURES and RULES
CLO	Explore and build on knowledge of grammar and vocabulary

TOPIC: Subject and Predicate

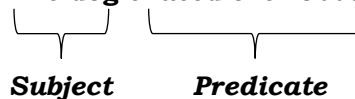
Achievement Indicator: Identify subject and predicate correctly in a sentence.

Subject and Predicate

In their simplest form sentences can usually be divided into two parts.

- a) What is being talked about? (**The subject**)
- b) What is being said about that thing or person? (**Predicate**)

For example: The dog chased the robber.



(The predicate of the sentence always contains the verb)

LITERACY WORKSHEET 4

Activity

Circle the subject and **underline** the predicate in each of the sentences given below.

1. The jelly wobbled about on my plate.
2. The politician was elected as the Prime Minister.
3. Jenny's spider had long hairy legs.
4. Scooby chased the cat up the tree.
5. Joeli discussed his game plan with the coach.
6. My mother told me to tidy up my room.
7. The fox outsmarted the farmer and ate the sheep.
8. Snow White lived with seven dwarves.

1009 NAVOLI SANGAM SCHOOL
HOMESTUDY PACKAGE 4
YEAR: 5- MATHS

STRAND	NUMBERS AND NUMERATION
SUB- STRAND	FRACTIONS
CLO	Identify and mixed numbers to improper fractions

Lesson Notes :

Convert Mixed number to Improper Fraction

To convert a mixed number to an improper fraction, you need to multiply the denominator with the whole number and add on the numerator to the product.

For Example:

Convert $2 \frac{1}{2}$ into improper fraction.

Step 1:

Look at the whole number which is 2. Multiply the whole number which is 2 with the denominator which is also 2. So once you multiply 2 and 2 it will give you 4. Finally, add 4 with the numerator which is 1. This gives you 5.

$2 \frac{1}{2}$	$2 \times 2 = 4$ $4 + 1 = 5$ $\underline{5/2}$
-----------------	--

(Note: In the original image, a blue 'X' is drawn over the '2' in the denominator of the mixed number, and blue arrows point from the '2' in the whole number to the '4+' and the '2' in the denominator.)

Step 3:

So children, an improper fraction will be written as:

$$\frac{5}{2} = 2 \frac{1}{2}$$

'Children remember that whenever you convert the mixed fraction to improper fraction and vice versa the denominator will always remains the same.'

Activity:

Convert each mixed numbers to an improper fraction.

a. $1 \frac{1}{3}$

b. $4 \frac{1}{3}$

c. $8 \frac{1}{10}$

d. $2 \frac{5}{6}$

e. $4 \frac{1}{2}$

f. $3 \frac{1}{3}$

1009 NAVOLI SANGAM SCHOOL
HOMESTUDY PACKAGE 4
YEAR: 5- ELEMENTARY SCIENCE

Strand 1: Living things and Environment

Sub Strand: Biodiversity, Relationships and Sustainability

Content Learning Outcomes: Investigate and Collect information on a native plant and animal and determine their population and distribution.

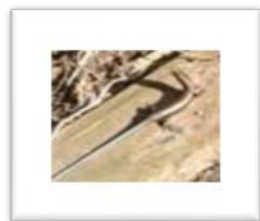
Summarised Notes

Interesting Facts - Native Animals of Fiji

- The only native mammal found in the Fiji is the bat.
- There are 6 species, 3 of which are fruit bats. Of the three species of fruit bat, the one you are most likely to see is the Polynesian Flying Fox.
- There are 27 species of reptiles of which 8 are endemic to Fiji.
- These include two Iguanas, 12 Skinks, 10 geckos and 3 snakes.

Native Species of Fiji

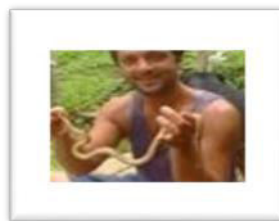
- Iguana – Banded Iguana found in Kadavu
- Skink
- Gecko
- Snakes - three types of snakes in Fiji
- Banded sea krait
- Pacific Boa
- Crabs
- Butterflies – sphinx moth
- Tree spiders
- Stick insects
- Mud dauber wasps



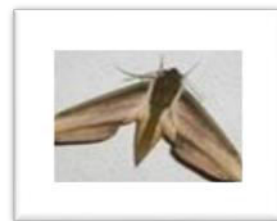
Skink



Gecko



Fiji boa



Sphinx moth



Banded Iguana



Hermit crab

Activity

1. How many species of reptiles could be found in Fiji? _____
2. Do some personal research on the native species. [This could be online or simple home discussion with elders]. **Note:** No writing is required for this.

1009 NAVOLI SANGAM SCHOOL
HOMESTUDY PACKAGE 4
YEAR: 5- HEALTHY LIVING

Strand 2: Building Healthy Relationships

Sub-Strand 5.2.2: Resilience And Proactive Behaviours

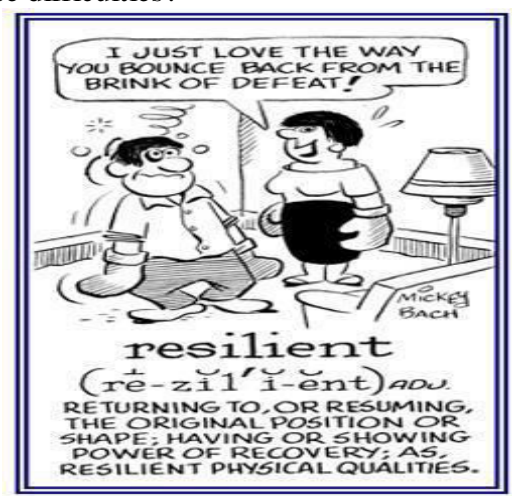
Content Learning outcome 5.2.2.1: Develop being assertive to reflect effective refusal and negotiation skills

Summarised Notes

UNIT 11 RESILIENCE AND PROACTIVE BEHAVIOURS

1. **Resilience** is our ability to keep going during hard times. For example, Tim a class five student sat for his short test but failed, he took his test paper and decided to do all his corrections and study them. Tim showed resilience when he accepted his test result and decided to do his corrections.

2. **Proactive behaviours** are actions that we take to overcome the difficulties that we face every day. For example, think of a hard time in your life when you were growing up. What did you do to overcome those difficulties?



Read each situation given below and write what you will do if you come across these situations.

1. The task you are doing in Maths is very hard. What do you do?

2. Your parents yell at you for not cleaning your room. What do you do?

3. You get a poor mark in your test. What do you do?

1009 NAVOLI SANGAM SCHOOL
HOMESTUDY PACKAGE 4
YEAR: 5/6-HINDI

STRAND	
SUB STRAND	
CLO	

TOPIC: & ☯ ● (Tense)

 (There are 3 forms of tenses)

(Present Tense)

○. ☞✚◆ & ☯● (Past Tense)

🕒 📅 ⌨️ 🔑 ✈️ 🖱️ & ☯️ ● (Future Tense)

 **(Activity)**

[illegible]

1009 NAVOLI SANGAM SCHOOL
HOMESTUDY PACKAGE 4
YEAR: 5- SOCIAL STUDIES

Strand - S3	Place And Environment
Sub – Strand – SS5.3.1	Features Of Places
Content Learning Outcomes	Discuss special physical features and the unique attraction of Fiji

Summarised Notes

Mapping

What is a map?

- A map is a drawing of a place as seen from above.
- It has special features that we need to understand to make map reading easier.
- **Mental maps are maps that we make up in our mind that help us to go from one place to another.**
- **Sketch maps are used to locate places which are unknown to us and they have special features in them.**

Special features of a map

There are **five main features** of **any map** that would help us to understand what the map is about and the different features that are drawn on. The five features include:

- Map title
- Direction
- Map key/ Legend
- Scale and distance
- Contour lines
- Symbols

Where is Fiji Located in the South Pacific

- Fiji is one of the islands in the South Pacific group.
- It is comprised of 322 islands.
- About 100 are inhabited, while the balance remains nature preserved.
- Fiji is situated in the Pacific region.
- The two main islands being Viti Levu and Vanua Levu.
- The Western side of Viti Levu is known for its dry and fertile soil.
- The Southern and Eastern parts of Viti Levu are usually wet and their forests are thick with high highlands.
- Likewise with Vanua Levu, its humid climate has similar vegetation to that of the Southern and Eastern part of Viti Levu.



Exercise

1. What is a map?

2. Explain the difference between Mental and Sketch map?

3. List down the names of five features of map.

4. Which part of Viti Levu is known for its dry and fertile soil?

5. Which part of the Viti levu is usually wet and with thick forests in highlands?
