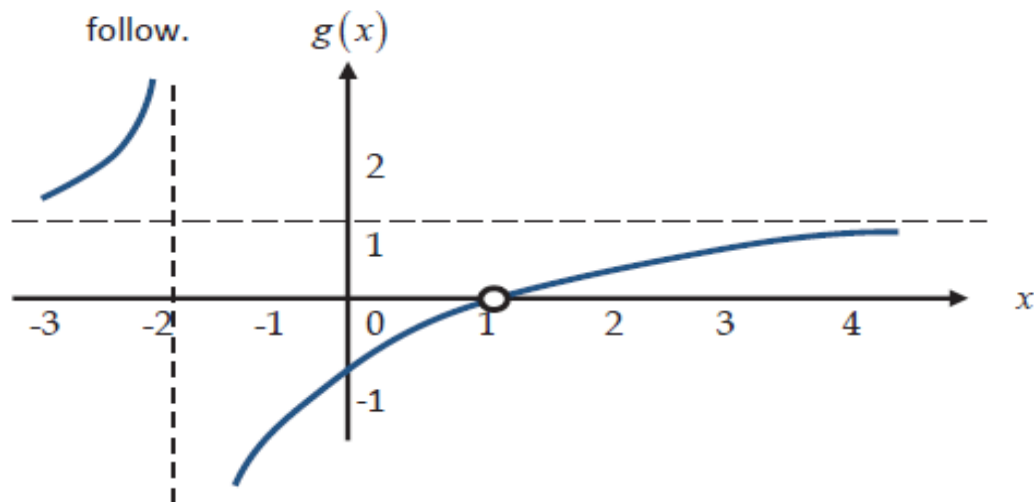


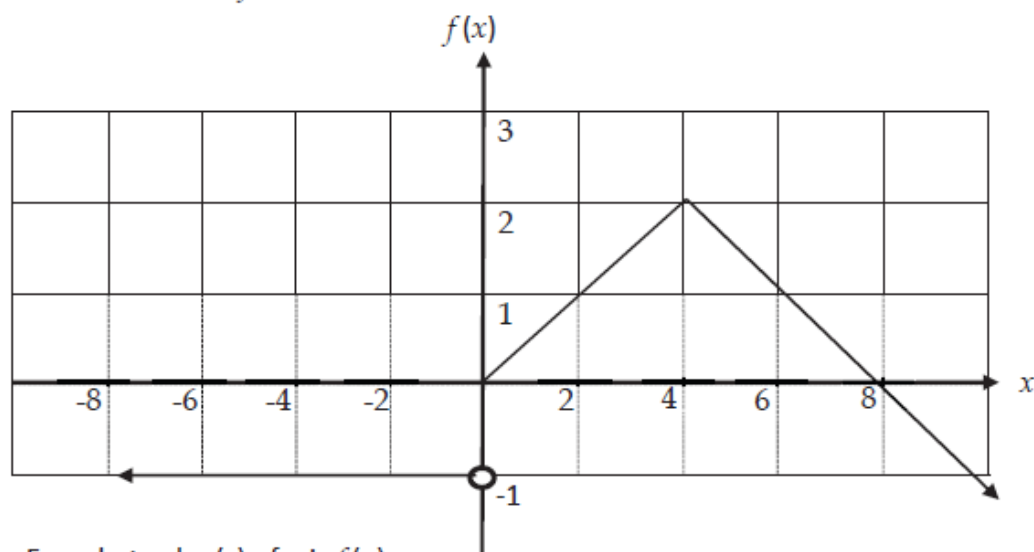
1. The graph of $g(x)$ is given below. Use the graph to answer the questions that follow.



- a) Find $\lim_{x \rightarrow \infty} g(x)$
 b) For what values of x is the function discontinuous?

SOLUTION

2. The graph of $f(x)$ is given below.

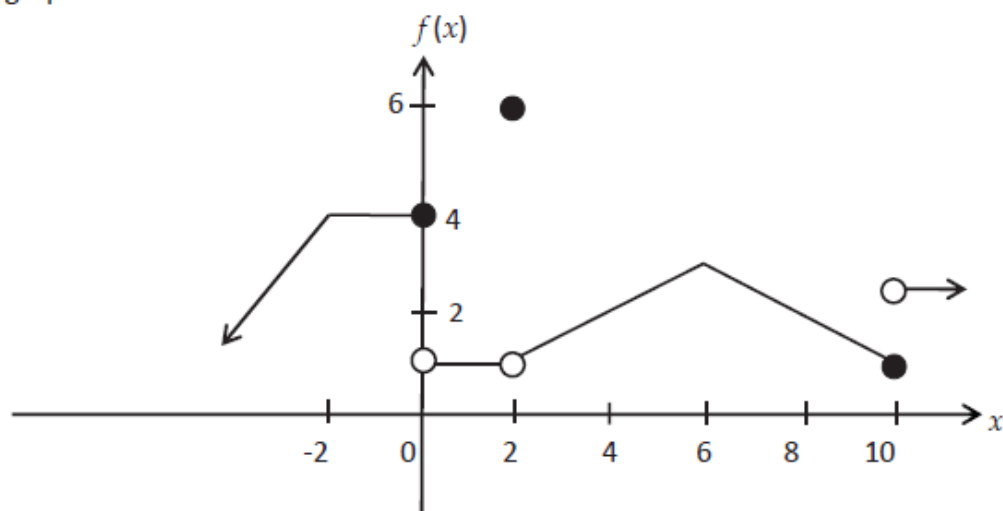


For what value(s) of x is $f(x)$:

- a) discontinuous
 b) not differentiable
 c) equal to zero

SOLUTION

3. The graph of a function is shown below.



Use the graph to give the value(s) of x for which $f(x)$

- a) is continuous but not differentiable.
- b) does not have a limit.
- c) is equal to 6.

SOLUTION