

PENANG SANGAM HIGH SCHOOL

P. O. BOX 44, RAKIRAKI

LESSON NOTES - 14

SCHOOL: PENANG SANGAM HIGH

SUBJECT: BASIC TECHNOLOGY

YEAR/ LEVEL: 9

Strand	BT9.3: DESIGN AND ENTERPRISING
Sub - Strand	BT9.3.1 DESIGN PROCESS
Content Learning Outcome	BT9.3.1.1 Identify and interpret the design cycle and apply the design process and design elements with various design activities.

ELEMENTS OF DESIGN

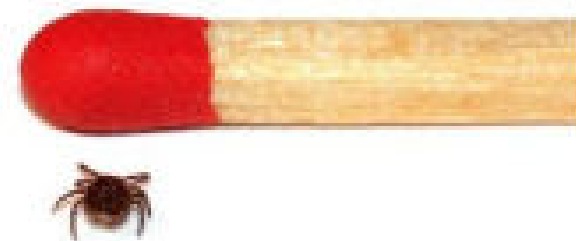
DIRECTION

Direction is about how our eyes move around the art work. It can be horizontal, vertical, curved, sloped or straight.



SIZE

Size is about the biggest or smallness of an area.



MASS

Mass is the amount of material in any sculptural work.



TRADITIONAL DESIGNS

Indigenous people possess important traditional knowledge that has allowed them to sustainably live and make use of biological and genetic diversity within their natural environment for generations.



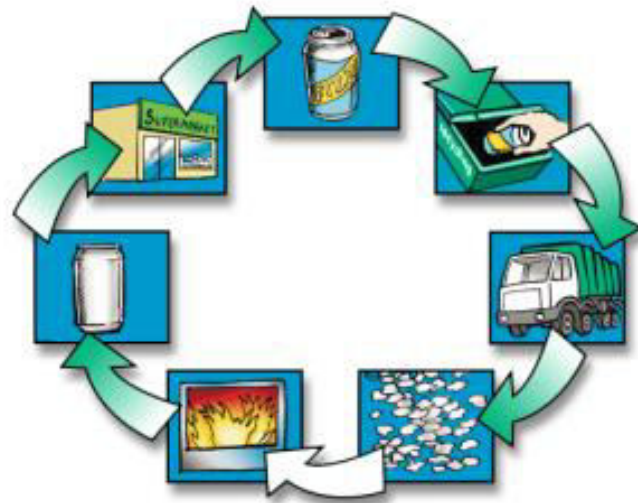
DESIGN FOR RECYCLING

This is a process where pre-production planning for safe and efficient recycling by eliminating as much as possible, of hazardous and non-recyclable materials from the production process.



WHY RECYCLE?

Recycling is good for the environment. It takes less energy to create new items from recycled materials than it does to create new products from raw materials. It takes less energy to create new items from recycled materials than it does to create new products from raw materials.



THE END

GREEN DESIGN

Designing physical objects that will benefit many future generations without harming them, the environment and the natural resources in any way. Boat made from waste plastic bottles.



SHORT ANSWER QUESTIONS

1. Explain the term DIRECTION under elements of design.

2. Explain design for recycling.

3. Which design will benefit many future generation without harming them.

4. Define the term *size* under elements of design.

5. Why recycle is good for environment.
