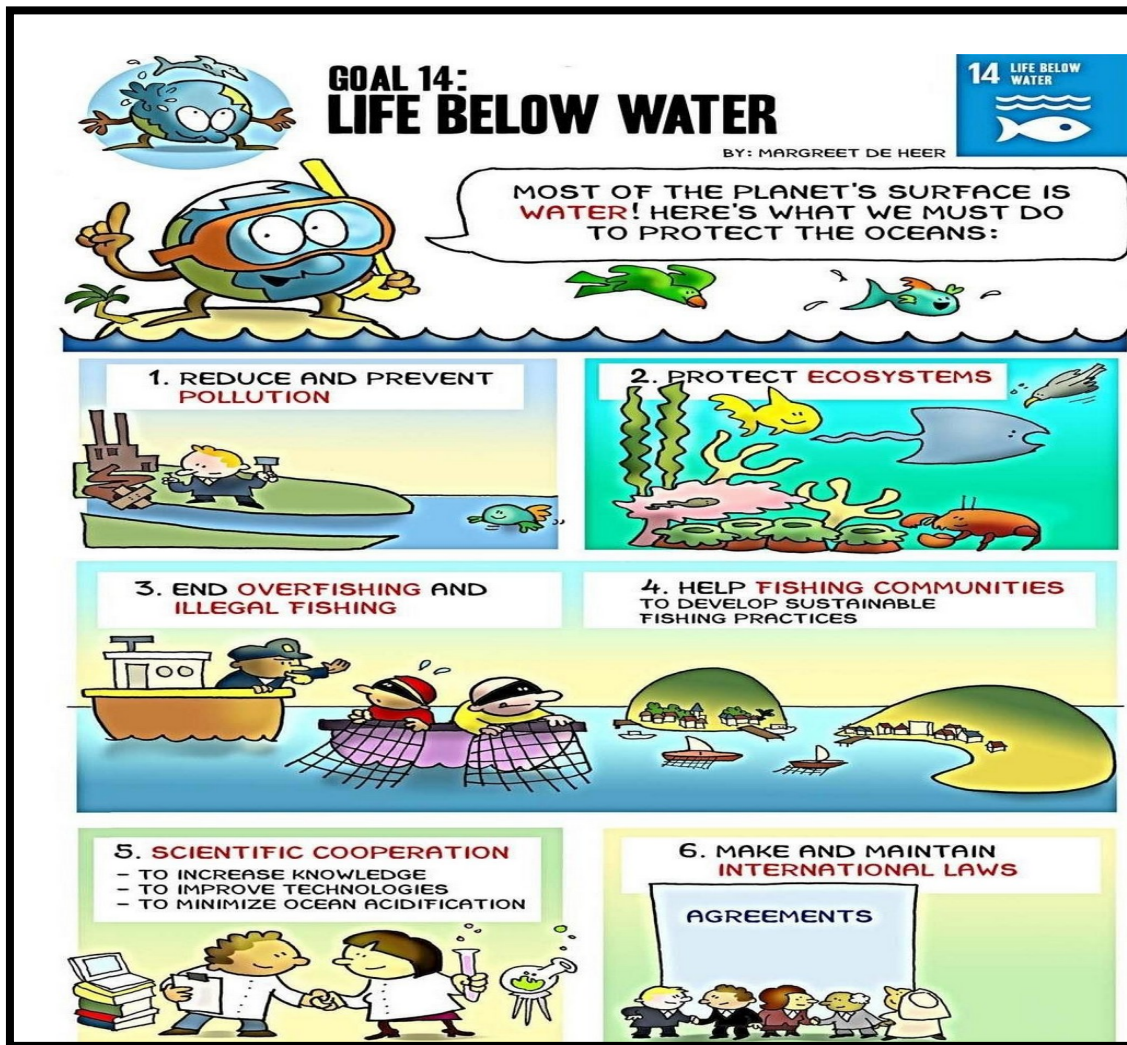


SUVA SANGAM COLLEGE
YEAR 9
ENGLISH
WORKSHEET 10



A. Study the text type below and answer the following questions.
Circle the letter of the correct answer.

1. The main idea portrayed in the sample is
 - A. Water and the resources around us is important
 - B. We should pollute our environment
 - C. Enhance unsustainable fishing
 - D. Keep our water ecosystem safe and clean
2. In picture 6, make and maintain are examples of
 - A. Assonance

- B. Alliteration
 - C. Personification
 - D. Simile
3. In picture 5, the term minimize simply means to
- A. Reduce
 - B. Prevent
 - C. Help
 - D. Protect
4. In picture 6, international laws means
- A. Laws of the village
 - B. Laws of the nation
 - C. Laws of the world
 - D. Household laws
5. The above cartoon strips contain _____ cartoons
- A. 2 B. 4 C. 6 D. 1

B. Open – ended questions

Answer the following questions in complete sentences.

1. What is the main idea portrayed in the sample above?
2. List **three** actions that are needed to protect the oceans.
3. Why is it important to stop illegal fishing?
4. In what way can Science help to protect oceans?
5. Discuss the importance of traditional methods of sustainable fishing.

C. Read the extracts given and use your knowledge of the play *Sera's Choice* to answer the questions that follow.

Sera: I asked to come with you (to the funeral) but you wouldn't take me. You were ashamed of your Fijian wife. Why do you hide everything from me? You go off on your own, with your friends and you leave me here all by myself. And people talk you know. Am I supposed to believe them?

- a) Explain why Anil refused to take Sera to his mother's funeral?
- b) Mention one thing Anil has hidden from Sera.
- c) Explain what the above scene reveals Anil's character.