



3055 BA SANGAM COLLEGE
PH: 6674003/9264117 E-mail: basangam@connect.com.fj



School: Ba Sangam College
Subject: Technical Drawing

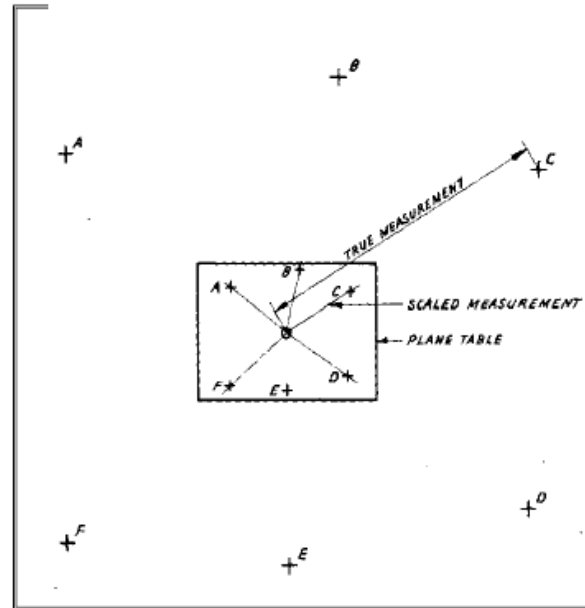
Year/Level: 11
Week 11

Name: _____
Year: _____

Strand	Geometrical Drawing
Sub Strand	Surveying
Content Learning Outcome	Know the different methods of surveying

RADIATION METHOD

If the radiation method is to be used to conduct a survey, the plane table is set up in a central position or in a suitable corner position so that all points to be surveyed are visible and accessible. With the sight rule set against a pin secured in the appropriate position, sights are then taken of each station. Lines are drawn on the paper as each sight is taken. The measurement from the central station to each outlying point is recorded and scaled on to the line and the survey completed. A similar method is used in draughting to reduce or increase the size of plane figures.



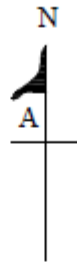
Activity (10 marks)

Balak's piece of land was surveyed at Vunivilo using Traverse and Radiation Methods and the data collected was recorded in a field book as given below.

- (i) From the given data in the field book, plot the survey pegs of Balak's piece of land to a scale of 1 : 1000 starting the Traverse from point A and complete the field book..

Join the boundary lines ABCDE.

FIELD BOOK		
LINE	BEARING	LENGTH (M)
AB	075°	100
BC	132°	95
CD	206°	170
DE	306°	150
EA	18°	



- (ii) Complete the field book given below using the Radiation method of Surveying starting from the central position O.

FIELD BOOK		
LINE	BEARING	DISTANCE
OA		
OB		
OC		
OD		
OE		

- (iii) State a suitable scale that could be used to draw the Survey Plan if the length of boundary line AB is doubled? Scale: _____