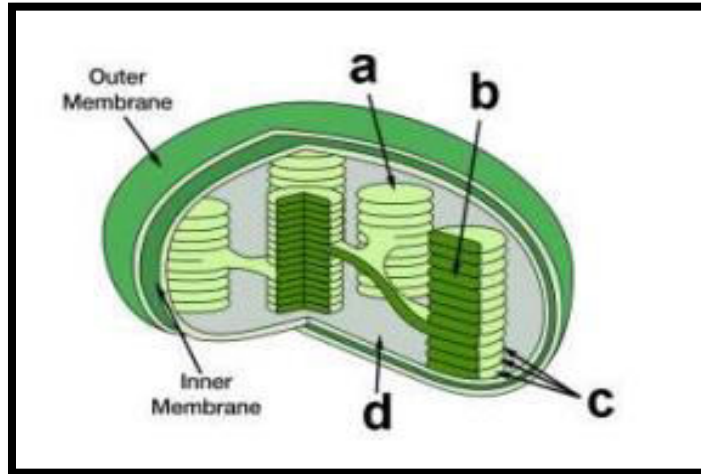


# SANGAM S K M COLLEGE-NADI

## YEAR 12 BIOLOGY WORKSHEET

### WEEK 3

1. The diagram given below is of a chloroplast. Label structures a-d.

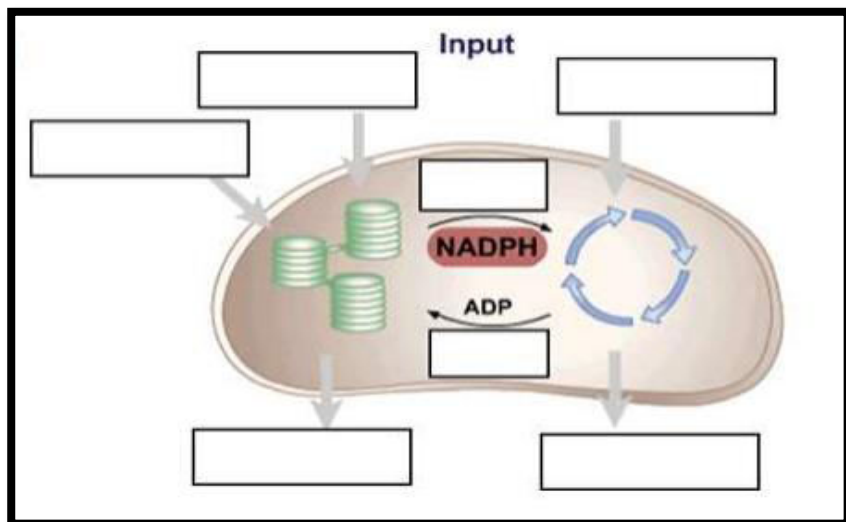


2. Write the word and balanced chemical equation for photosynthesis?
3. Identify two importance of sunlight in light reaction of photosynthesis?
4. Complete the table given below.

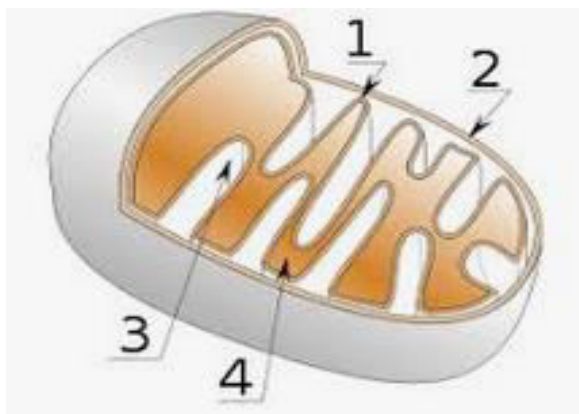
Reaction	Where does it take place in the chloroplast	Reactants	Products
Light Reaction			
Dark Reaction			

5. Explain how ATP is different from ADP.
6. Explain how an increase in carbondioxide increases the rate of photosynthesis.

7. Label the diagram to the right with the following: water, oxygen, carbon dioxide, glucose, ATP, NADP, sunlight



8. Identify the role of NADP<sup>+</sup> .
9. Identify the parts of the mitochondria label 1, 2, 3 & 4.



10. Write the correct chemical equation for **anaerobic respiration** in Humans.
11. Name **two** products formed during anaerobic respiration in yeast.
12. Explain how the numerous folding of the inner membrane (cristae) of mitochondria is advantageous.