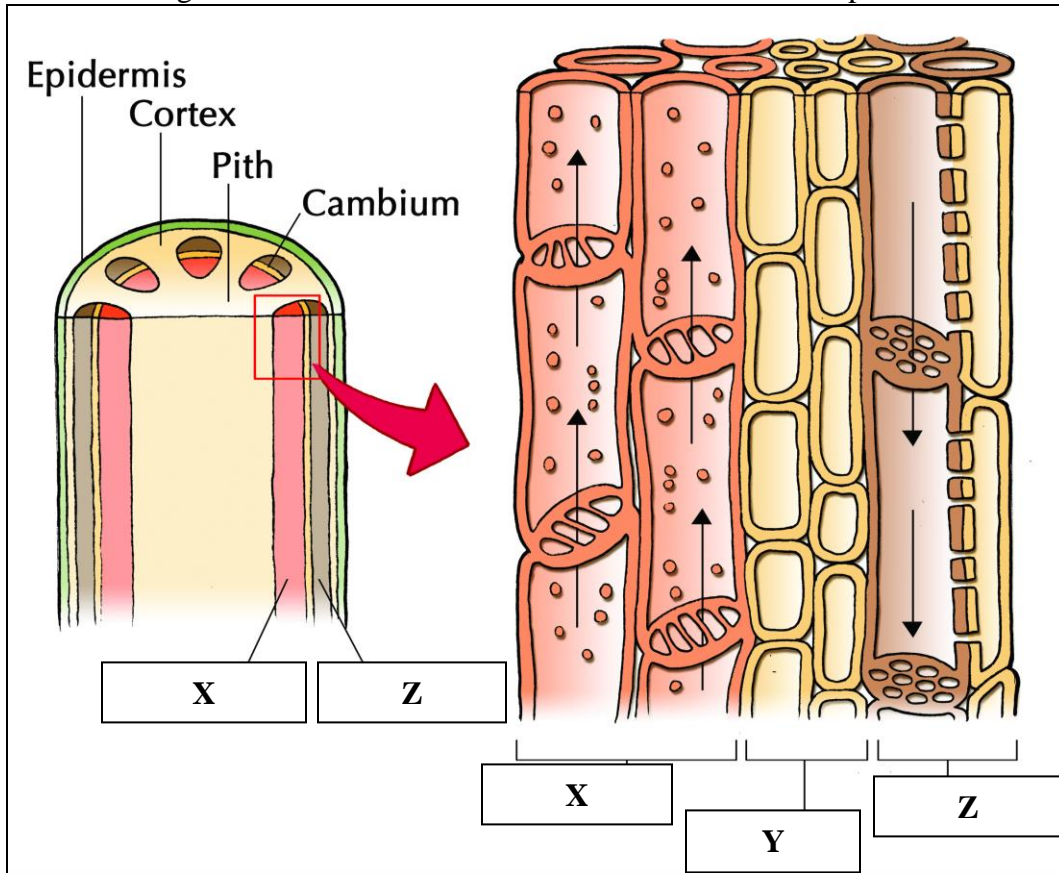


**SANGAM SKM COLLEGE - NADI**  
**YEAR 11 BIOLOGY**  
**WORKSHEET – WEEK 4**

**Question 1**

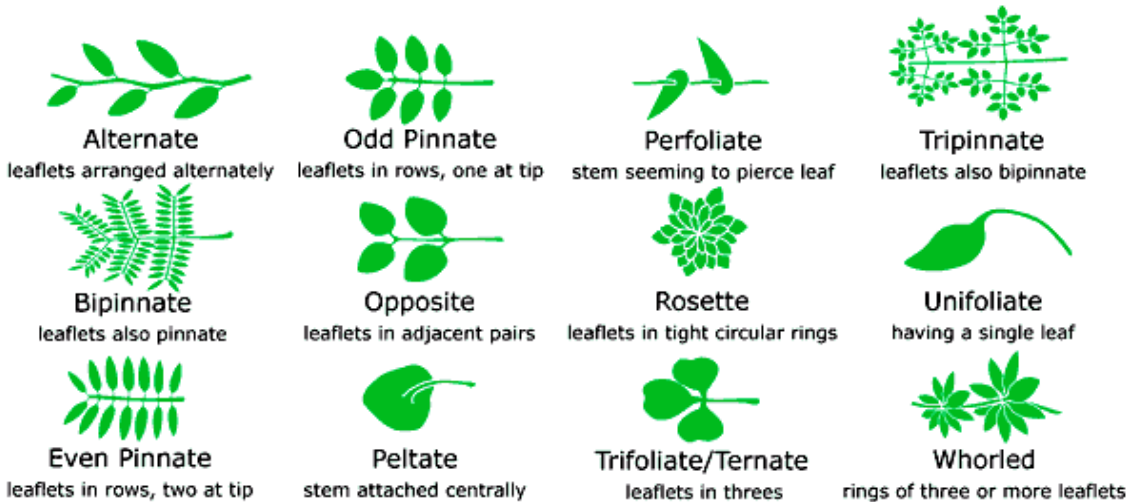
Given below is a diagram of a vertical section of a **vascular bundle** in a plant stem.



- i. Name the parts labeled **X, Y and Z**.
- ii. Give one **function** of structure **Y**.

**Question 2**

Study the different types of leaf arrangements that are present in nature as shown and collect leaf samples of the various types to create a **LEAF ALBUM** for yourself.



### Question 3

Answer the crossword puzzle shown below.

# PLANT STRUCTURE CROSSWORD



## Across

- 3) The .... bundle is a strand of conducting vessels in the stem or leaves
- 6) The root .... protects the growing tip
- 9) Female sex cell
- 10) Living tissue which carries food substances from the stems to growing tissues
- 11) Nonliving tissue which carries water and minerals from the roots to the leaves
- 12) Made up of the anther and filament
- 13) The main photosynthetic organ of a plant

## Down

- 1) Specialised cell which open and close the stomata
- 2) Supports the anther
- 4) Layer of cells in a plant that produces new phloem and xylem cells
- 5) Absorbs water and minerals from the ground
- 7) Male part of the flower where pollen are produced via meiosis
- 8) Small openings on the underside of a leaf allowing gases to pass through
- 12) Organ of plants which provide structure and transportation of water and nutrients