

Sangam SKM College- Nadi

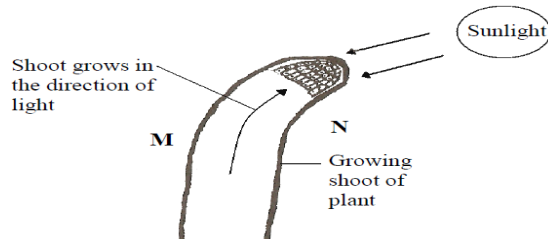
Year 11

Biology

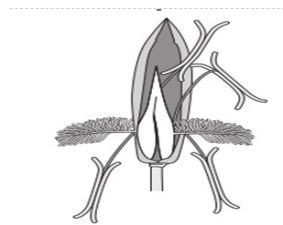
Worksheet 5

Questions

1. The diagram given below shows the upper part of a pot plant which is exposed to direct sunlight near a window.



- i. Name the growth response shown in the above diagram.
 - ii. Suggest a hormone which causes this growth response.
 - iii. Which side of the shoot **M** or **N** will have a higher concentration of the hormone present?
 - iv. State an adaptive value of this growth response to the plant.
2. Some flowering plants transfer their male gametes (pollen) by using insects and others use wind. The diagram shows a plant that is wind pollinated.



- i. Give two ways you can tell from the diagram that this plant is wind pollinated.
 - ii. Suggest why insects rarely visit wind pollinated flowers.
3. Define the following terms:
- i. Self – pollination
 - ii. Cross – pollination
 - iii. Double fertilization
 - iv. Epigeal germination
 - v. Hypogeal germination

