

BASIC TECHNOLOGY – YEAR 9
2021 - SOLUTIONS

WEEK 2

TOPIC: WORKSHOP SAFETY

DATE: Monday (31/05) – Friday (04/06)

MONDAY (31/05) –PERSONAL SAFETY

1. List 4 personal safety habits to be practised in a wood work room.
Wash hands before and after work. Walk – do not run at the workplace. Keep the workplace clean and tidy at all times. Never distract the attention of another co-worker.
2. Draw any two Proper Protective Equipment's



TUESDAY (01/06) – HAND TOOL SAFETY

1. List 2 hand tools safety
 - Carry tools securely in a tool box to protect yourself as well as the tool.
 - Do not carry too many tools at once.
2. Explain the STATEMENT ***“use the right tool for the right job”***
Use the right tool to complete a job safely, quickly, and efficiently. EXAMPLE – a chisel not to be used to nail a Timber

WEDNESDAY (02/06) – MACHINE TOOL SAFETY

1. Explain why any machine in the wood work shop should be serviced at a regular basis.
For better performance and to avoid injuries.
2. Before using any machine example a Drill. What is the first operating procedure you must know?
Know the safe operation of the Drill.

THURSDAY (03/06) ELECTRICAL SAFETY

1. Explain the statement ***“never mix water with electricity”***
You can be electrocuted if you have wet hands and touch any electrical appliance.
2. What is the first step to be taken in case of an electric shock?
Immediately switch of the power supply.

FRIDAY (04/06) FIRST AID/OHS

1. Define
 - First AID the first help given to an injured person before the doctor arrives.
 - OHS

Occupational health and safety applied in your situation is concerned with safe guarding your safety, health and welfare while in the workplace. The goal of all occupational health and safety programs is to foster a safe work environment. It also protects co-workers. The school you attend is required by the OHS Act 1996 and OHS Regulation to provide a workplace that is safe and minimizes risk to you, your fellow workers and teachers.

Reference: Year 9 BT exercise book and TD Worksheets

WEEK 3

TOPIC: GEOMETRY

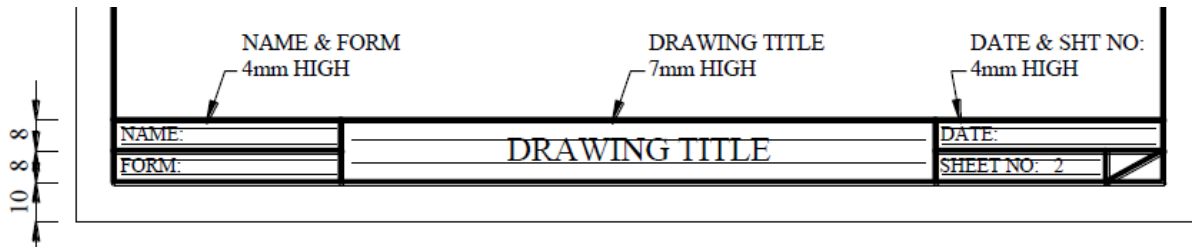
DATE: Monday (07/06) – Friday (11/06)

MONDAY (07/06) Basic Technical drawing Instruments

1. Define.
TECHNICAL DRAWING is intended to concisely and clearly communicate all needed specifications to transform an idea into information.
2. State the uses of drawing compass and set squares
Drawing compass is used for drawing arcs, circles and stepping off distances.
Set squares are used in technical drawing for providing straight edges at right angles to a base line. The two common types of set squares are 30°/60°/90° and 45°/45°/90° angles.

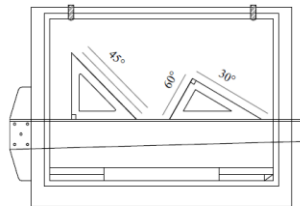
TUESDAY (08/06) Preparing A4 Paper Layout/ TITLE BLOCK

Fill in the title block given below. Write you Name, Year, Date sheet number and any Title.
 Note : to use appropriate guidelines before you start writing)



WEDNESDAY (09/06) Use of set Squares

1. Draw sketches to show how to get 45 and 60 degrees using your set squares and T-square



THURSDAY (10/06) Types of line and uses

1. Fill in the table

Line type	Drawing	Use
Construction line		Very thin continuous line used for construction work in drawings
Visible outline		Thick continuous line used to represent features that can be seen like outlines, border lines, etc.
Break line		Used to show where an object is broken to save space or to reveal internal features.

FRIDAY (11/06) Styles of lettering and numbering

In the spaces provided do vertical lettering (A-Z) and numbering (1 – 10)

A B C D E F G H I J K L M N O P Q R S T U V W X Y Z & 1 2 3 4 5 6 7 8 9 0

Reference: Year 9 BT exercise book and TD worksheets