

NADRALA SANGAM SCHOOL

GENERAL SUBJECTS

YEAR 4

WORKSHEET 2

ELEMENTARY SCIENCE

1. Draw a plant and label the different parts.



2. Fill in the blanks

- a. Plants grow towards _____.
- b. _____ grow downwards.
- c. Plants with weak stems are called _____.
- d. _____ plants close their leaves when touched for protection.

3. The groups of animals below are called _____, which also means that they have backbones.



HEALTHY LIVING

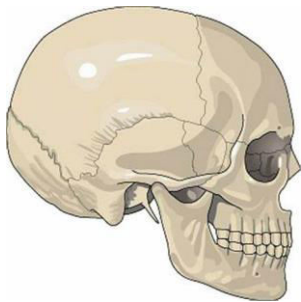
1. Below is a picture of a _____.



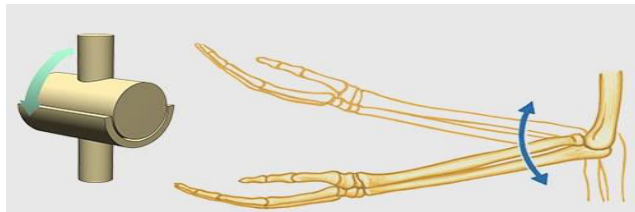
2. Joints

a. Bones are connected to other bones at _____.

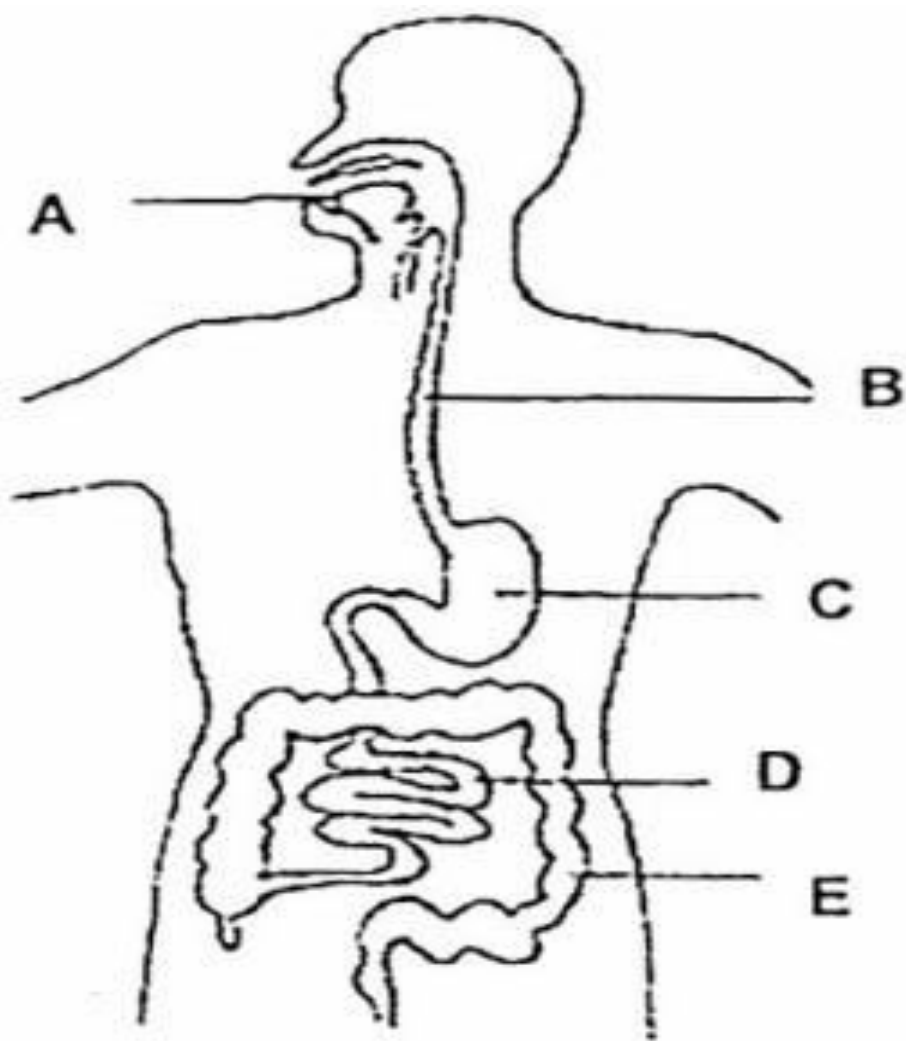
b. _____ joint.



c. _____ joint.



3. In the diagram below, label the different digestive process.



4. Write down the functions of each digestion organs.

- a. _____

- b. _____

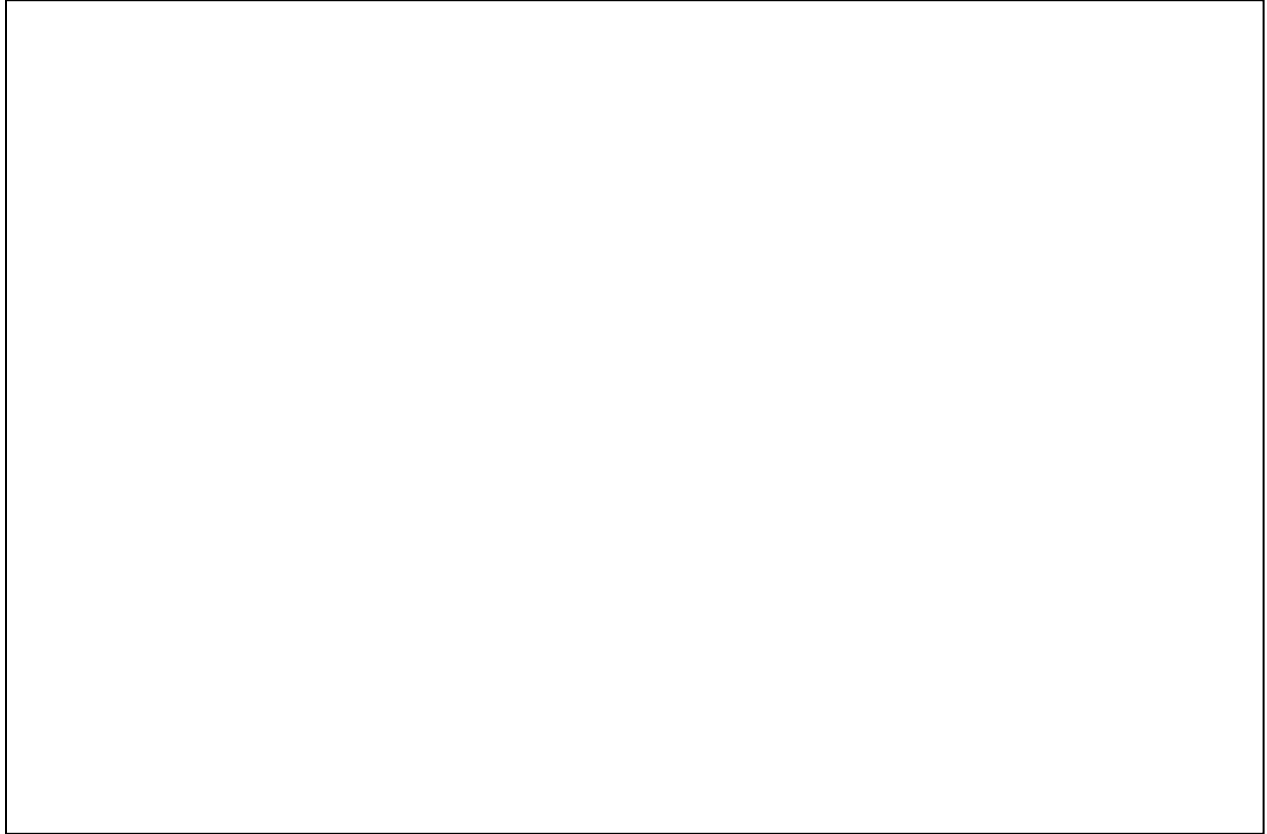
- c. _____

- d. _____

e. _____

SOCIAL STUDIES

1. Draw some of the activities that you do with your best friend.



2. Write a paragraph about your best friend.

My Best Friend

3. Draw a Farming community.

