

Nalovo Sangam School
Year 6 English
Worksheet 3

1. Write only **one word** in each space to complete the passage.

2019	killed	working	world	medicines
------	--------	---------	-------	-----------

A Dreadful Disease

Corona virus was one disease that has _____ many people around the _____. It was first discovered in _____ in Wuhan, China. Scientists and doctors are _____ together to try and put up _____ to cure this deadly disease. People are now receiving injections to prevent themselves from getting Corona virus.

a) Rewrite the sentence below into its **singular form**.

The girls used the knives to weed yesterday.

b) Rewrite the sentence below into its **plural form**.

The woman wrote the letter to the president.

3. COMPLETING SENTENCES

Add five or more words to complete each sentence correctly.

(a) Sera did not _____

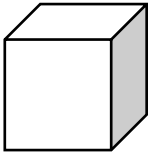
(b) Last Saturday _____

(c) I would like _____

Nalovo Sangam School

Year 6 Maths

Worksheet3

1.	The Nadroga Milo Kaji Team took three buses to Nadi for the tournament. Each bus cost \$1 250. How much would the three buses cost?		
2	Calculate to find the answer. a)23.6 $\begin{array}{r} \underline{\times 4} \\ \hline \end{array}$	a)	
	b) 451.89 $\begin{array}{r} \underline{\times 6} \\ \hline \end{array}$	b)	
3	Ram bought a loaf of bread and ate $\frac{1}{2}$ of it while his friend ate $\frac{1}{3}$. a) What fraction of the bread did they eat in all?	a)	
	b) What fraction is left?	b)	
4	a) How many 200ml container can be filled from a 20litres tank?		
	b) Find the volume: 3m 5m 4m 		

Nalovo Sangam School
Year 6 Healthy Living
Worksheet 3

Fill in the blanks using the words in the box given below.

trusted	follow	natural	positively	conflicts
walk	control	manners	accept	personalities
brain	peer	lifestyle	self-esteem	decisions

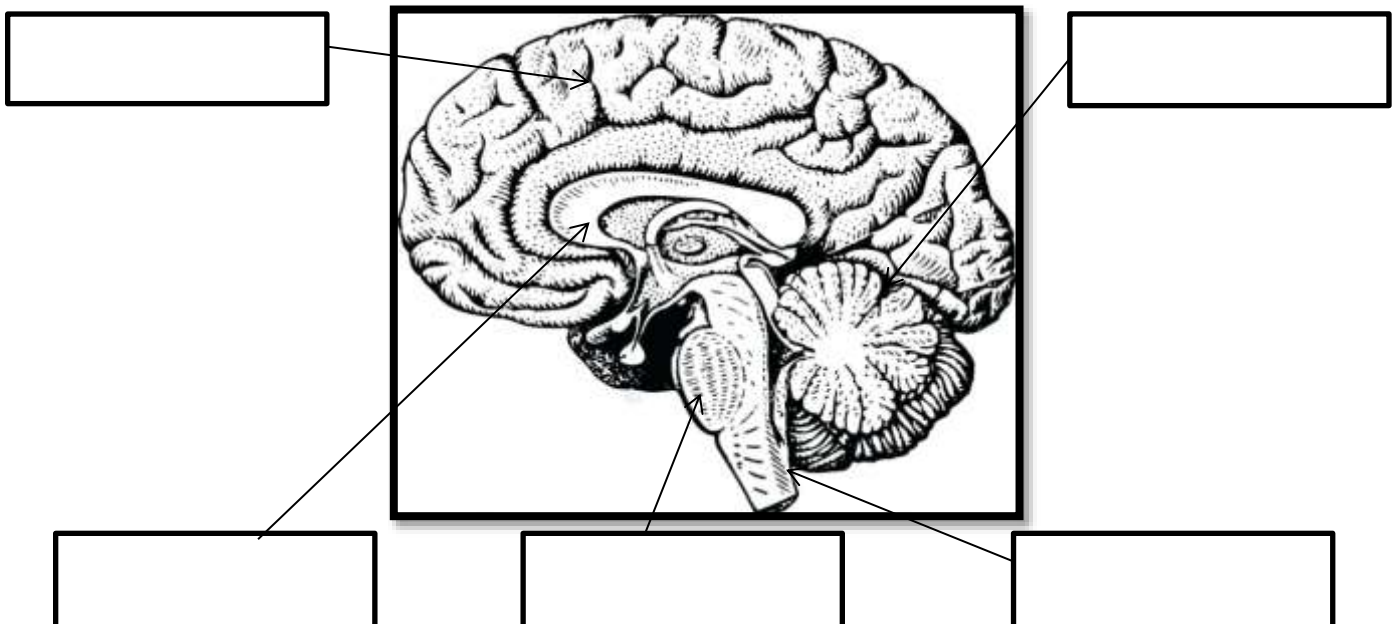
1. Seek an adult's help if you are out of _____.
2. The _____ receive the message and send responses.
3. We need to _____ changes when we grow old.
4. It is our _____ that shaped our destiny.
5. Person's _____ can affect reproductive health.
6. A person with low _____ can easily be influenced.
7. Bad _____ pressure encourages bad habit.
8. People have changed the _____ resources a lot.
9. The relationships we have, define our _____.
10. Having good _____ help us to be with many friends.
11. _____ can be bad for our health and destroy relationships.
12. We must respond _____ when we are bullied.
13. When we are angry, we need to _____ away.
14. We must _____ the safety rules at home to avoid injuries.
15. Always go with _____ adults when going to the shop.

PART IV ILLUSTRATIONS AND LABELLING (10 marks)

1. Name the parts of the brain.

WORD LIST

hypothalamus	cerebrum	cerebellum	Spinal cord	Medulla oblongata
--------------	----------	------------	-------------	-------------------



;

[Type here]

Sangam Education Board – Online Resources

Nalovo Sangam School

Year 6 Hindi





Worksheet 3

नीचे दिए गए वाक्यों को अच्छी तरह से पढ़ कर सही ✓ या गलत X का निशान बनाइए ।

१. क्रोध करने से हमारा बहुत नुकसान होता है ।
२. विद्या ग्रहण करने के बाद हमें सही और गलत की पहचान होने लगती है ।
३. रावण ने रामायण लिखी है ।
४. श्री कृष्ण के उपदेश रामायण में है ।
५. गीता में कुल सात सौ श्लोक हैं ।

नीचे दिए गए चित्र का अच्छी तरह से अध्ययन करके दिए गए शब्दों से लेबल कीजिए ।

तोरन	दिपक	ध्वज	कमल	हवन कुण्ड	ओउम
------	------	------	-----	-----------	-----

Nalovo Sangam School
Year 6 Social Science
Worksheet 3

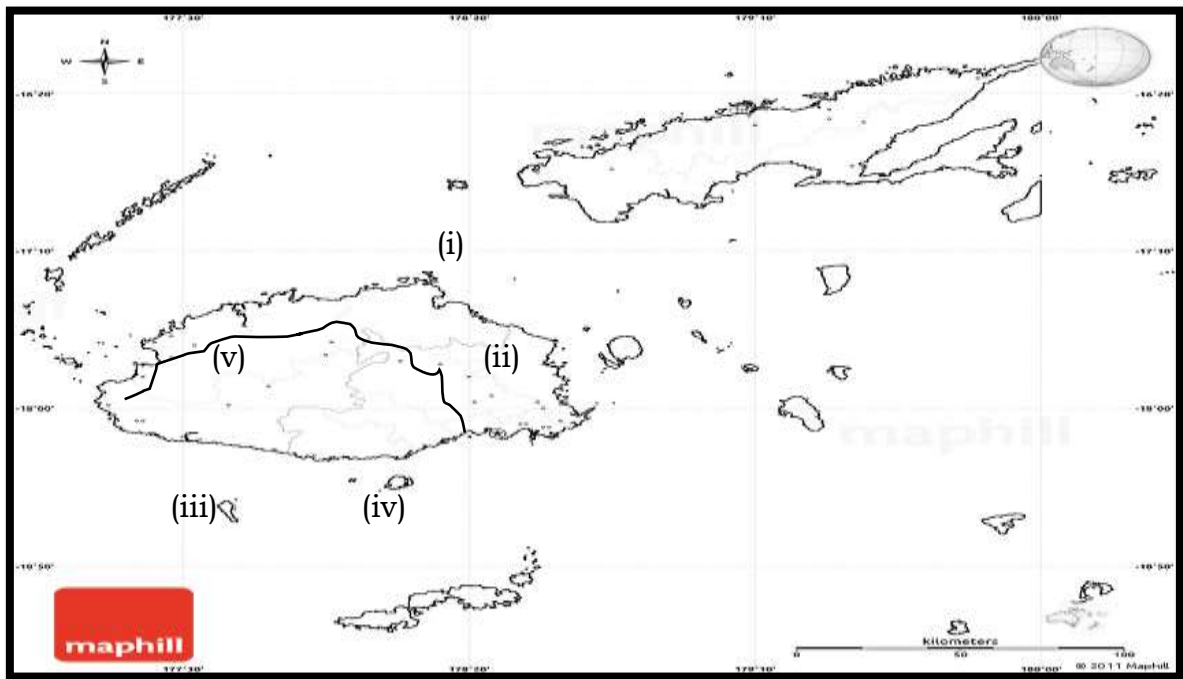
1. Study these pictures and label them.

LIST OF NAMES:

Hon Aiyaz Sayed-Khaiyum	Ratu Sir Kamisese Mara	Mahendra Chaudhry	Hon Josaia Voreqe Bainimarama	Ratu Seru Epenisa Cakobau
-------------------------	------------------------	-------------------	-------------------------------	---------------------------

2. Map Reading



Name the place and features marked (i) – (v).

- (i) The sea between Viti Levu and Vanua Levu- _____
- (ii) The old capital of Fiji - _____
- (iii) The island with red prawns - _____
- (iv) Perform fire walking ceremony - _____

Nalovo Sangam School
Year 6 Elementary Science
Worksheet 3

Answer **all** the questions.

1. Name two introduced animals to Fiji.

2. What does MRS GREN stand for?

3. Name two things plants need to grow strong and healthy.

4. How are tomato seeds dispersed?

5. Why were some animals being introduced to Fiji?

6. Write one laboratory rule.

7. What would you do if the science laboratory catches fire?

8. The teacher asked some students to put the butter outside on a hot day.

a) What would happen to the butter after some time?

b) Name the process taking place.

9. Name a natural material and its use.
